



GREENCREATIVE

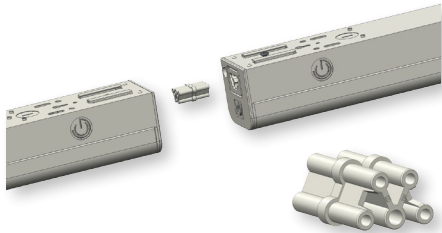
Bringing You the Latest in LED Technology



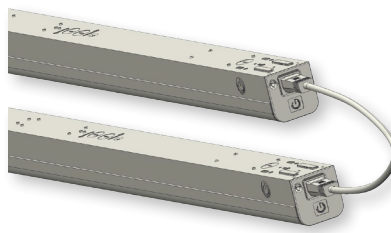
STRIP QWIKLINK SERIES

STRIP PRODUCT FEATURES

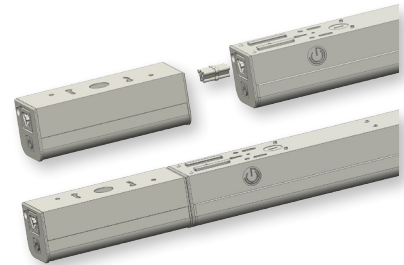
QWIKLINK Connection System



QWIKLINK Connector



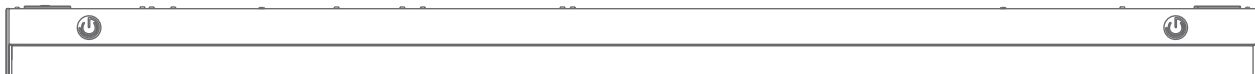
QWIKLINK Cable



QWIKLINK Sensor

The QWIKLINK connection system uses the latest in toolless technology to easily and seamlessly connect up to 64' of fixtures. The QWIKLINK connector provides a line voltage and 0-10V dimming connection between fixtures. The QWIKLINK cable comes in two lengths (7.9in. & 5ft.) and allows for angled and distant fixture connection. The QWIKLINK sensor integrates with a single fixture or an entire row for occupancy sensing and dimming.

Versatile Installation



Removable light engine with safety cables for easy installation

Installation Features

Wiring Quick Connectors (x5)

Back Knockouts (x4)

Side Knockouts (x4)

Integrated Cable Clamps (x2)

QWIKLINK Sockets (x2)

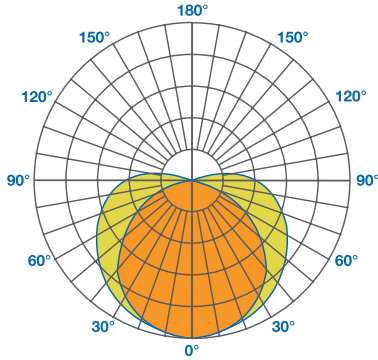
Back Screw Mounts (x3)

Suspension Mounts (x2)

Each STRIP fixture installs quickly and easily. The light engine safety cable allows the whole product to be installed at once. Multiple knockouts located on each fixture allow for flexibility when wiring, regardless if the main input enters from the back or side of the product. All wiring is done using quick connectors, including 0-10V dimming, to save time during installation. Each STRIP fixture can be surface mounted using a J-box plate or suspended using aircraft cables.

STRIP PRODUCT FEATURES

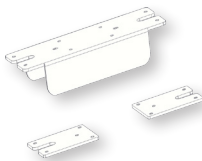
Even Distribution & Uplighting



The STRIP QWIKLINK Series provides even distribution and up to 10% uplighting to limit the “cave effect” associated with other fixtures with more direct lighting. The smooth light output helps create a visually comfortable and secure environment.

Options & Accessories

A



B



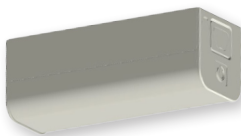
BACK PLATES FOR SUSPENSION IN CONTINUOUS RUN

- A - Mechanical connection between suspended fixtures (use with 1 aircraft cable/fixture)
- B - Mechanical connection between suspended fixtures (use with 2 aircraft cables/fixture)



EMERGENCY BACKUP

- 10W emergency backup for 90 minutes of illumination
- Option available for all STRIP fixtures (factory installation)



OCCUPANCY SENSOR

- Occupancy sensor with dimming for 8' to 20' mounting heights
- Option available for all STRIP fixtures



STEP DIMMING MODULE

- Quick dimming with 100% to 50% light output
- Works with 2 standard wall switches
- Option available for all STRIP fixtures (factory installation)



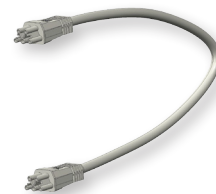
AIRCRAFT CABLE

- For suspended mounting
- Accessory sold separately for all STRIP fixtures



J-BOX MOUNTING PLATE

- Steel plate for surface mounting on round or hexagonal 4" J-boxes
- Accessory sold separately for all STRIP fixtures

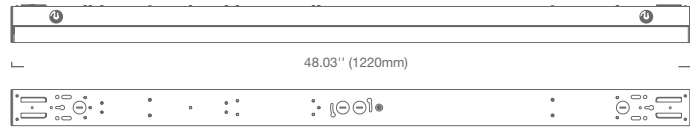


QWIKLINK CABLE

- Allows for easy electrical connection
- 7.9in. & 5ft. versions for angled or distant connection
- Accessory sold separately for all STRIP fixtures

STRIP QWIKLINK SERIES

STRIP 4' 22.5W & STRIP 4' 38.5W





STRIP 4' 22.5W

- 2600lm
- 115 LPW
- 120-277V universal voltage
- 3000K, 3500K, 4000K & 5000K CCT
- 100,000-hr lifetime 10-yr warranty

STRIP 4' 38.5W

- 5050lm
- 131 LPW
- 120-277V universal voltage
- 3000K, 3500K, 4000K & 5000K CCT
- 100,000-hr lifetime 10-yr warranty

Specifications

	Model	Product	CCT	Power (W)	Lumens (lm)	LPW	Beam Angle	CRI (typ.)	Dim	Life (hrs)	Voltage
	22.5STRIPDIM/830/277V	28317	3000K	22.5	2500	111	120°	82	Yes	100,000	120-277V
	22.5STRIPDIM/835/277V	28318	3500K	22.5	2500	111	120°	82	Yes	100,000	120-277V
	22.5STRIPDIM/840/277V	28319	4000K	22.5	2600	115	120°	82	Yes	100,000	120-277V
	22.5STRIPDIM/850/277V	28320	5000K	22.5	2600	115	120°	82	Yes	100,000	120-277V
	38.5STRIPDIM/830/277V	28321	3000K	38.5	4950	129	120°	82	Yes	100,000	120-277V
	38.5STRIPDIM/835/277V	28322	3500K	38.5	4950	129	120°	82	Yes	100,000	120-277V
	38.5STRIPDIM/840/277V	28323	4000K	38.5	5050	131	120°	82	Yes	100,000	120-277V
	38.5STRIPDIM/850/277V	28324	5000K	38.5	5050	131	120°	82	Yes	100,000	120-277V

* Suitable for damp locations only

Product Ordering Information

Must Select				Options (Factory Installation): Select or Leave Blank	
Power	CRI	CCT	Voltage	Step Dimming	EM Backup
22.5STRIP 22.5W	8 82	30 3000K	277V 120-277V	(Blank) None	(Blank) None
38.5STRIP 38.5W		35 3500K		STEPPDIM Step Dimming 100/50	EM 10W EM Backup
		40 4000K			
		50 5000K			

Ex. 22.5STRIP/840/277V/STEPPDIM/EM

Accessory Ordering Information

Model	Product	Description	Model	Product	Description
STPSENSOR	28388	Microwave Sensor QWIKLINK Connection Module 120-277V - Tri-level - Field Adjustable	STP10CABLE	28383	10' Aircraft Cable with Y-toggle (Set of 2 Cables Suitable for 1 Fixture)
SENSORRC	97881	Remote Control for STPSENSOR	STPPLATE4C	28387	Back Plate for Mechanical Connection Between Suspended Fixtures in a Continuous Run (2 Aircraft Cables Per Fixture)
JBOXPLATE	28384	J-box Cover Plate	STPPLATE2C	97885	Back Plate for Mechanical Connection Between Suspended Fixtures in a Continuous Run (1 Aircraft Cable Per Fixture)
WIRECON20	28385	7.9" (20cm) QWIKLINK Cable	PC6	97860	6' Power Cord 18/3 (Not Pre-wired to Fixture)
WIRECON150	28386	5' QWIKLINK Cable	PC12	97861	12' Power Cord 18/3 (Not Pre-wired to Fixture)
STP6CABLE	28382	6' Aircraft Cable with Y-toggle (Set of 2 Cables Suitable for 1 Fixture)			



GREEN CREATIVE
1200 Bayhill Drive, Suite 220
San Bruno, CA 94066

Tel / Fax: (866) 774-5433
info@greencreative.com
www.greencreative.com

f / GREENCREATIVELED
/ GCLightingLED
in / GREEN CREATIVE