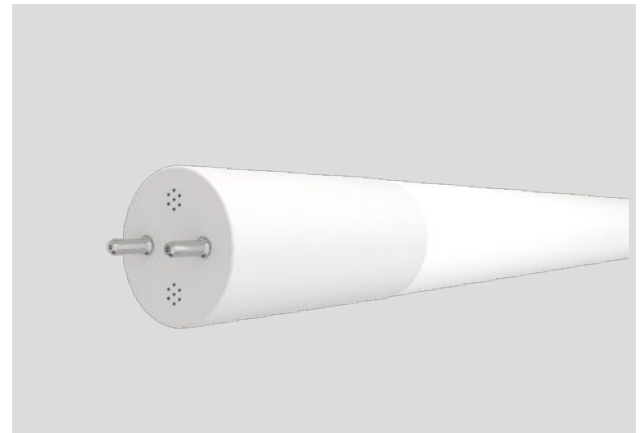


HYBrid T8 (UL Type A+UEB)

MODEL

Model: 12T8/4F/xxx/HYB/R
 15T8/4F/xxx/HYB/R

Where xxx means 824-965 which indicates CRI and color temperature



042623

0 - 10V DIMMER COMPATIBILITY

Model: 12T8/4F/xxx/HYB/R

Brand	Series	Model	Load (w)	Ballast
				Keystone
				KTLD-2T8LED-UV-IS-VDIM
Lutron	Nova	NTSTV-DV	960W	Compatible
	Diva	DVSCTV	1000W	Not Compatible
	Nova	NFTV	N.A	Compatible
	Diva	DVSTV	1000W	Compatible
Leviton	Illumatech	IP710-LFZ	1200W	Compatible

0 - 10V DIMMER COMPATIBILITY

Model: 15T8/4F/xxx/HYB/R

Brand	Series	Model	Load (w)	Ballast
				Keystone
				KTLD-2T8LED-UV-IS-VDIM
Lutron	Nova	NTSTV-DV	960W	Compatible
	Diva	DVSCTV	1000W	Compatible
	Nova	NFTV	N.A	Compatible
	Diva	DVSTV	1000W	Compatible
Leviton	Illumatech	IP710-LFZ	1200W	Compatible

GREEN CREATIVE has provided this dimmer switch compatibility chart for guidance when selecting a dimmer and lamp combination. Our lamps were tested for compatibility with the above listed dimmers. Dimmers that do not appear on the chart might still be compatible but have not been tested. All testing has been performed with a stable main supply. The quality of the local main, existing installation and wiring, as well as different manufacturer versions of the above dimmers may affect dimming performance. Since no assurance can be provided regarding these factors, it is a general recommendation to perform a test on-site prior to installing the LED lamps.