

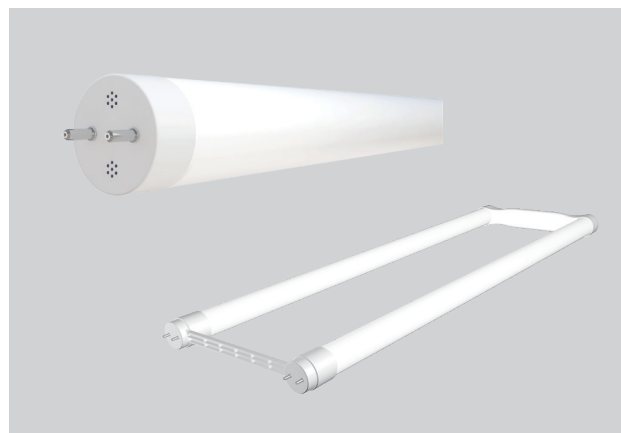


# T8 DIR FAMILY

## MODEL

Model: 8T8/2F/xxx/DIR/RD  
 9.5T8/4F/xxx/HE/DIR  
 10T8/3F/xxx/DIR  
 11T8/4F/xxx/DIR  
 11T8/4F/xxx/DIR/C  
 14T8/4F/xxx/DIR  
 15T8U6/xxx/DIR

Where xxx means 824-965 which indicates CRI and color temperature



## EMERGENCY BALLAST COMPATIBILITY

Model: 8T8/2F/xxx/DIR/RD 9.5T8/4F/xxx/HE/DIR 10T8/3F/xxx/DIR 11T8/4F/xxx/DIR  
 11T8/4F/xxx/DIR/C 14T8/4F/xxx/DIR

| Brand     | Model           | Compatibility |
|-----------|-----------------|---------------|
| Bodine    | B50             | Compatible    |
| Bodine    | ELI-S-20        | Compatible    |
| Espen     | VEM500DV(L)     | Compatible    |
| Espen     | VEM1300DV(L)    | Compatible    |
| Espen     | VEM700DV(L)     | Compatible    |
| Exitronix | XEB-7-B-LM      | Compatible    |
| Keystone  | KT-EMRG-1300-T5 | Compatible    |
| Tamlite   | BAL1400LPACTD   | Compatible    |

## EMERGENCY BALLAST COMPATIBILITY

Model: 15T8U6/xxx/DIR

| Brand   | Model              | Compatibility |
|---------|--------------------|---------------|
| Bodine  | B50                | Compatible    |
| Bodine  | ELI-S-20           | Compatible    |
| FullHam | FH7-UNV-500L-CEC   | Compatible    |
| FullHam | FH11-UNV-750L-CEC  | Compatible    |
| FullHam | FH12-UNV-1400L-CEC | Compatible    |
| Espen   | VEM500DV(L)        | Compatible    |
| Espen   | VEM700DV(L)        | Compatible    |

GREEN CREATIVE has provided this emergency ballast compatibility chart for guidance when selecting an emergency ballast and lamp combination. Lamps were tested for compatibility with the above listed emergency ballasts. Emergency ballasts that do not appear on the chart might still be compatible but have not been tested. All testing has been performed with a stable main supply. The quality of the local main, existing installation and wiring, as well as different manufacturer versions of the above emergency ballasts may affect lamp performance. Since no assurance can be provided regarding these factors, it is a general recommendation to perform a test on-site prior to installing the LED lamps.