

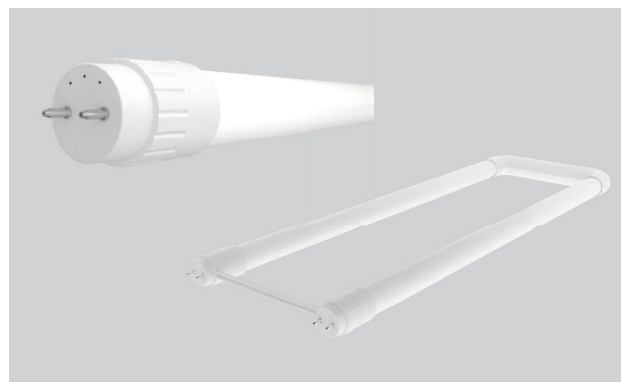


T8 DIR FAMILY

MODEL

Model: 8T8/2F/xxx/DIR	8T8/2F/xxx/DIR/R
8T8/2F/xxx/DIR/RC	
8T8/3F/xxx/DIR	8T8/3F/xxx/DIR/R
8T8/3F/xxx/DIR/RC	
10.5T8/4F/xxx/DIR	10.5T8/4F/xxx/DIR/R
10.5T8/4F/xxx/DIR/RC	10.5T8/4F/xxx/DIR/RD
13T8/4F/xxx/DIR	13T8/4F/xxx/DIR/R
13T8/4F/xxx/DIR/RC	
16T8U6/xxx/DIR	16T8U6/xxx/DIR/R

Where xxx means 824-965 which indicates CRI and color temperature



EMERGENCY BALLAST COMPATIBILITY

Model: 8T8/2F/xxx/DIR 8T8/2F/xxx/DIR/R 8T8/2F/xxx/DIR/RC 13T8/4F/xxx/DIR
13T8/4F/xxx/DIR/RC 13T8/4F/xxx/DIR/R 16T8U6/xxx/DIR 16T8U6/xxx/DIR/R

Brand	Model	Compatibility
Bodline	B30ST	Compatible
	B50	Compatible
	B54	Compatible
	B60	Compatible
	B100	Compatible
	LP550	Compatible
	LP600	Compatible
Iota	I-42-EM-R-J	Compatible
	ICE-80	Compatible
	I-320	Compatible
	I-232	Compatible
	I-162	Compatible
	I-32	Compatible
	ISL-54	Compatible
	ISL-540	Compatible
	ISD-80	Compatible
Lithonia	EI500	Not Compatible
	PSQ500QD	Compatible
	PS1400QD	Compatible
Fulham	FH4-DUAL-700L	Compatible
	FH3-DUAL-450L	Compatible
	FH5-DUAL-1400L	Compatible
	FH7-UNV-500L-CEC	Compatible
	FH12-UNV-1400L-CEC	Compatible
	FH11-UNV-750L-CEC	Compatible
ALP	EFP 32GS	Compatible



T8 DIR FAMILY

EMERGENCY BALLAST COMPATIBILITY

Model: 8T8/3F/xxx/DIR 8T8/3F/xxx/DIR/R 8T8/3F/xxx/DIR/RC

Brand	Model	Compatibility
Bodline	B30ST	Compatible
	B50	Compatible
	B54	Compatible
	B60	Compatible
	B100	Not Compatible
	LP550	Compatible
	LP600	Compatible
Iota	I-42-EM-R-J	Compatible
	ICE-80	Compatible
	I-320	Compatible
	I-232	Compatible
	I-162	Compatible
	I-32	Compatible
	ISL-54	Compatible
	ISL-540	Compatible
	ISD-80	Compatible
Lithonia	EI500	Not Compatible
	PSQ500QD	Compatible
	PS1400QD	Compatible
Fulham	FH4-DUAL-700L	Compatible
	FH3-DUAL-450L	Not Compatible
	FH5-DUAL-1400L	Compatible
	FH7-UNV-500L-CEC	Compatible
	FH12-UNV-1400L-CEC	Compatible
	FH11-UNV-750L-CEC	Compatible
ALP	EFP 32GS	Not Compatible



T8 DIR FAMILY

EMERGENCY BALLAST COMPATIBILITY

Model: 10.5T8/4F/xxx/DIR 10.5T8/4F/xxx/DIR/R 10.5T8/4F/xxx/DIR/RC 10.5T8/4F/xxx/DIR/RD

Brand	Model	Compatibility
Bodline	B30ST	Compatible
	B50	Compatible
	B54	Compatible
	B60	Compatible
	B100	Compatible
	LP550	Compatible
	LP600	Compatible
Iota	I-42-EM-R-J	Compatible
	ICE-80	Compatible
	I-320	Compatible
	I-232	Compatible
	I-162	Compatible
	I-32	Compatible
	ISL-54	Compatible
	ISL-540	Compatible
	ISD-80	Compatible
Lithonia	EI500	Not Compatible
	PSQ500QD	Compatible
	PS1400QD	Compatible
Fulham	FH4-DUAL-700L	Compatible
	FH3-DUAL-450L	Compatible
	FH5-DUAL-1400L	Compatible
	FH7-UNV-500L-CEC	Compatible
	FH12-UNV-1400L-CEC	Compatible
	FH11-UNV-750L-CEC	Compatible
ALP	EFP 32GS	Compatible

*GREEN CREATIVE has provided this emergency ballast compatibility chart for guidance when selecting an emergency ballast and lamp combination. Lamps were tested for compatibility with the above listed emergency ballasts. Emergency ballasts that do not appear on the chart might still be compatible but have not been tested. All testing has been performed with a stable main supply. The quality of the local main, existing installation and wiring, as well as different manufacturer versions of the above emergency ballasts may affect lamp performance. Since no assurance can be provided regarding these factors, it is a general recommendation to perform a test on-site prior to installing the LED lamps.