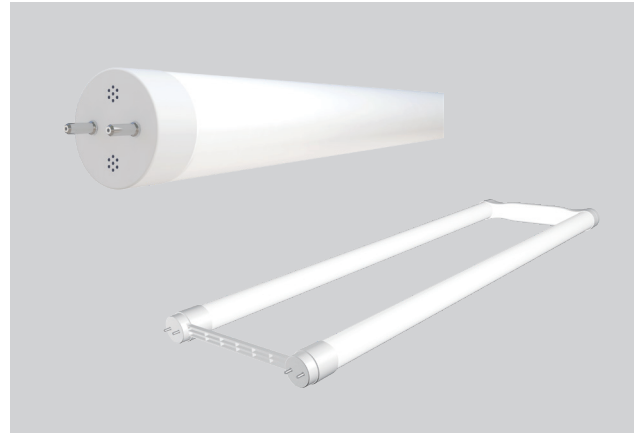


T8 DIR FAMILY

MODEL

Model: 8T8/2F/xxx/DIR/RD
 9.5T8/4F/xxx/HE/DIR
 10T8/3F/xxx/DIR
 11T8/4F/xxx/DIR
 11T8/4F/xxx/DIR/C
 14T8/4F/xxx/DIR
 15T8U6/xxx/DIR

Where xxx means 824-965 which indicates CRI and color temperature



0 - 10V DIMMER COMPATIBILITY

Model: 8T8/2F/xxx/DIR/RD 9.5T8/4F/xxx/HE/DIR 10T8/3F/xxx/DIR 11T8/4F/xxx/DIR
 11T8/4F/xxx/DIR/C 14T8/4F/xxx/DIR

Brand	Series	Model	Load (w)	Ballast	
				General Electric	Keystone
				GE132MVPSN-V03	KTLD-2T8LED-UV-IS-VDIM
LUXdrive	N.A.	0A019	N.A.	Compatible	Compatible
Lutron	Nova	NTSTV-DV	960W	-	Compatible
	Nova	NFTV	N.A.	-	Compatible
	Diva	DVSTV	960W	-	Compatible
	Diva	DVSCTV	1000W	-	Compatible
Leviton	Illumatech	IP710-LFZ	1200W	-	Compatible

0 - 10V DIMMER COMPATIBILITY

Model: 15T8/U6/xxx/DIR

Brand	Series	Model	Load (w)	Ballast	
				Philips	Keystone
				IZT-2S32-SC	KTLD-2T8LED-UV-IS-VDIM
LUXdrive	N.A.	0A019	N.A.	Compatible	Compatible*
Lutron	Nova	NTSTV-DV	960W	-	Compatible*
	Nova	NFTV	N.A.	-	Compatible*
	Diva	DVSTV	960W	-	Compatible*
	Diva	DVSCTV	1000W	-	Compatible*
Leviton	Illumatech	IP710-LFZ	1200W	-	Compatible*

*Only 1 lamp compatible.

GREEN CREATIVE has provided this dimmer switch compatibility chart for guidance when selecting a dimmer and lamp combination. Our lamps were tested for compatibility with the above listed dimmers. Dimmers that do not appear on the chart might still be compatible but have not been tested. All testing has been performed with a stable main supply. The quality of the local main, existing installation and wiring, as well as different manufacturer versions of the above dimmers may affect dimming performance. Since no assurance can be provided regarding these factors, it is a general recommendation to perform a test on-site prior to installing the LED lamps.