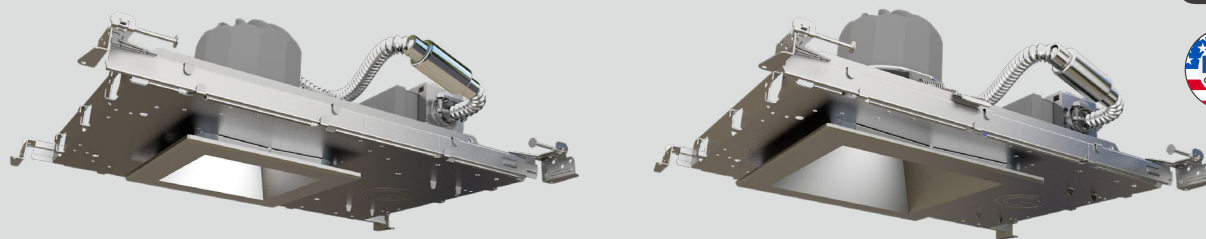


SQUARE NEW CONSTRUCTION SPECFIT SERIES



Powered by SelectDrive and TRUE CHROMA technology, SpecFit New Construction fixtures provide consistent, high quality lighting that can meet the most demanding lighting applications. The flexible, field changeable SpecFit platform provides options in fixture sizes, lumen outputs, optics, trim finishes, and fixture controls making it an ideal solution for commercial, educational, hospitality and retail construction projects.



SPECIFICATIONS

Light Engine and Driver

Frame Housing	Light Engines	CRI	CCT	Driver		Optical Distribution	Options
SPFTS4 4" SPECFIT Square New Construction	SelectDrive Light Engines	90 90+ CRI	27 2700K	SelectDrive Drivers		MD Medium 60° (Installed Standard)	SD347 347V - 240V Step Down Transformer
	LES Small Light Engine 500-700-1000 lumens			KDIM120V 120V, 50/60Hz Forward/Reverse Phase dimming			
SPFTS6 6" SPECFIT Square New Construction	LEM Medium Light Engine 1500-2000-2500 lumens	97 97 CRI 3000K only	30 3000K	KDIM010UNV SelectDrive 120-277V, 50/60Hz 0-10V dimming		VN Very Narrow 25°	EM 10.7W Emergency Backup
	LEL Large Light Engine 3000-4000-5000 lumens		35 3500K	Fixed Output Drivers		NR Narrow 40°	EM%-CEC California Title 20 Compliant 10.7W Emergency Backup
	Fixed Output Light Engines		40 4000K	PSRUNV 0-10V Driver + SR Ready Bridge, 120-277V	ELD-E010UNV EldoLED ECOdrive 0-10V 1%, 120-277V	WD Wide 75°	OUT Outdoor Debris Ingress Protection
	LE05 500 lumens			XT010UNV Signify 0-10V Driver 1% Dimming, 120-277V	ELD-EDALIUNV EldoLED ECOdrive DALI 1%, 120-277V		ES Philips EasySense ceiling mount sensor
	LE07 700 lumens		50 5000K	LUT-1UNV Lutron EcoSystem 1% Dimming, 120-277V	ELD-S010UNV EldoLED SOLOdrive 0-10V 0.1%, 120-277V		ENLS-IL Enlighted Two Wire ENLIGHTED ONE Compact Sensor
	LE10 1000 lumens			LUT-5UNV Lutron EcoSystem 5% Dimming, 120-277V	ELD-SDALIUNV EldoLED SOLOdrive DALI 0.1%, 120-277V		ENLS-CL Enlighted Two Wire CONNECTED LIGHTING Compact Sensor
	LE15 1500 lumens						ENLS-IOT Enlighted Two Wire IOT Compact Sensor
	LE20 2000 lumens			LUT-L3DUNV Lutron Hi-lume 3-Wire 1% Dimming, 120-277V			

Reflector

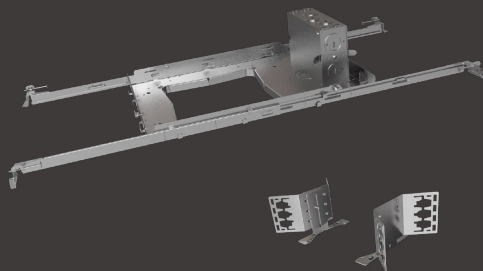
Shape & Size		Finish	
ADS4 4" Square	ADS6 6" Square	CC Clear Diffuse Trim and Flange	WH Matte White Trim and Flange



Office



Retail



NEW CONSTRUCTION FRAME

The SPECFIT new construction frames, made of the highest quality galvanized steel, are designed to be installed in suspended T-grid or wood joist ceilings. The low profile bar hangers with non-pass through construction and leveling flanges contain an integral tee bar clip and preinstalled nail, quick and safe installation in standard 2x2' and 2x4' suspended ceilings. The attached junction box and prewired driver, with quick connect MC cable allows for easy fixture wiring. Optional field installable butterfly brackets are also available for C-Channel or conduit suspension. EM unit can be factory installed on demand with a specifically designed bracket.

SELECTDRIVE DRIVERS

SPECFIT luminaires come standard with SelectDrive technology, which allows for field selection of lumen output. Select from three different lumen output levels by sliding the selector switch on top of the 0-10V dimming driver with low end cutoff. A standard 12V auxiliary port with stand-by power function allow for additional field installation of sensors or control systems, offering even more lighting design flexibility.

Select Drive



Enlighted

LUTRON®

eldoLED

ES
EasySense

TAKE THE CONTROL

Take even more control of SPECFIT fixtures with a variety of control system options. These include the Lutron 5-Series Ecosystem driver which provides smooth dimming to 5% and the Lutron Hi-Lume 1% EcoSystem driver with Soft-On, Fade-to-Black which dims to 1%. EldoLED ECOdrive and SOLOdrive drivers available in 0-10V and DALi configurations and dim smoothly to 1% and 0.1% respectively. Additional sensors such as enlightened compact sensors and Philips EasySense sensors, can be field installed and directly integrate with the factory provided Philips Xitanium driver and Sensor Ready Bridge.

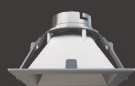
TRUE CHROMA

SPECFIT, powered by TRUE CHROMA technology, has the highest color accuracy standard in the market. TRUE CHROMA starts with a maximum 3 step SDCM LED light source. Then, based on the traditional CRI and new IES TM-30-15 standards, TRUE CHROMA delivers $CRI \geq 95$, $R9 \geq 50$ and $Rf \geq 93$. Rest assured that new spaces lit with SPECFIT fixtures powered by TRUE CHROMA will look their best.



REFLECTORS

The sturdy injection molded polycarbonate reflector, with post plating and painting treatment, is manufactured with performance in mind. All reflectors are designed with up to 42° optical cut off to help minimize aperture brightness in the ceiling and reduce glare. The standard full Clear Diffuse and Matte White finishes compliment most of the common ceiling color. The reflector's spring action clips allow for a secure installation in ceilings up from 1/2" to 2" thick. The multiple choice of beam angles thanks to its field interchangeable lenses allow for even more design flexibility.



CC



WH



Field interchangeable lens