

SLIMDISK INSTALLATION GUIDE - WARNING

WARNING – Read all product labels and instructions before installing fixture.

WARNING – Risk of fire or electric shock. LED Retrofit Kit installation requires knowledge of luminaires electrical systems. Installation should be performed only by a qualified electrician in accordance with the National Electrical Code and relevant local code.

WARNING – Risk of fire or electric shock. Install this kit only in the luminaires that have the construction features and dimensions shown in the photographs and/or drawings.

WARNING – To prevent wiring damage or abrasion, do not expose wiring to edges of sheet metal or other sharp objects.

WARNING – Do not make or alter any open holes in an enclosure of wiring or electrical components during kit installation.

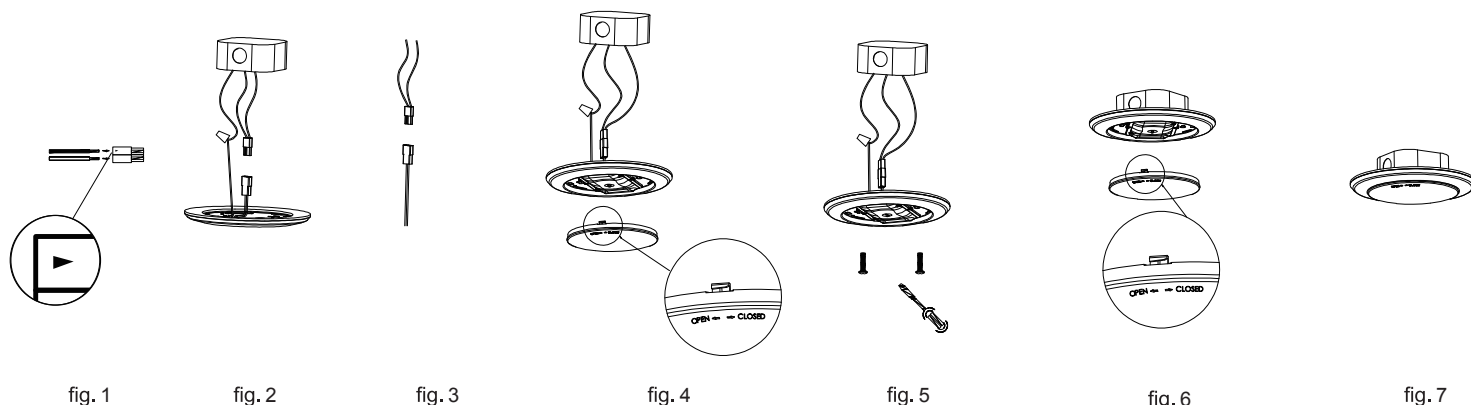
WARNING – The recessed luminaire is intended for mounting only in a covered ceiling where only the led side of the luminaire will be exposed to damp or dry locations.

WARNING – INSTALLATION SHOULD ONLY BE PERFORMED AFTER POWER TO THE FIXTURE HAS BEEN DISCONNECTED.

4" J-BOX INSTALLATION

Compatible with most standard 4" J-boxes with minimum height measuring 1.5". Not all existing J-boxes meeting these requirements will be compatible. A test installation should always be performed.

1. Make sure the POWER IS TURNED OFF at the source to the J-box in which you are installing the product.
2. Insert the existing wire ends from the J-box into the LED adapter (fig.1). Insert the black wire into the side marked arrow and the white wire into the other side.
Make sure both wires are tightly secured in the LED adapter.
3. Connect the ground wire from the J-box to the ground wire (yellow-green) from the downlight using a wire nut (fig. 2). Make sure the wires are tightly secured in the wire nut.
4. Connect the male LED adaptor of the J-box to the female LED adaptor of the downlight. (fig. 3).
5. Remove the lens by twisting counterclockwise (fig. 4).
6. Carefully tuck all wires inside the J-box and attach the downlight to the J-box using two of the provided screws (fig. 5). Use the longer screws for a deep J-box or the shorter screws for a shallow J-box.
7. Adjust the color temperature(2700K/3000K/3500K/4000K/5000K) to desired one, by sliding the black selector switch in the center of LED board.
8. Twist the lens clockwise until it locks in place (fig. 6).
9. Gently push the downlight up until flush with ceiling surface. (fig. 7).



5-6" RECESSED INCANDESCENT HOUSING INSTALLATION

1. Only for use with accessory SDSK6/ACC(sold separately)
2. Make sure the POWER IS TURNED OFF at the source to the recessed housing in which you are installing the product.
3. Screw the E26 adapter into the socket (fig. 1).
4. Insert the mounting springs into the slots in the back of the downlight (fig. 2).
5. Connect the male LED adaptor of the J-box to the female LED adaptor of the downlight (fig. 3).
6. Strip the end of yellow-green ground wire and secure it inside the housing by wrapping the stripped wire into a circular loop and using one of the following options (fig. 4): a) Fasten using existing screw inside housing b) Fasten using existing bolt inside housing and provided nut c) Fasten using provided ground screw and existing hole in housing.
7. Remove the lens and adjust the color temperature(2700K/3000K/3500K/4000K/5000K) to desired one, by sliding the black selector switch in the center of LED board (fig. 5). Then put back the lens by twisting clockwise until it locks in place.
8. Squeeze the mounting springs and insert them inside the housing retaining brackets (fig. 6). Carefully tuck all wires inside the housing and gently push the downlight up until flush with ceiling surface (fig. 7).

