



GREENCREATIVE



Evolution In Retrofitting

PinFit PL Omni

Evolution In Retrofitting

A patented modular socket design and embedded universal driver make the PinFit suitable for any PL Lamp retrofit application.

Versatility In Installation

Easily switch between G24d and G24q lamp sockets by using the proprietary modular socket design.

Optimal Field Flexibility

An embedded universal driver allows the PinFit to perform in electronic ballast, magnetic ballast, or no-ballast environments.

Omnidirectional Lighting

Install vertically or horizontally for 360° light distribution.

Industry Compatibility

6.8W and 9W PinFit lamps available in four color temperatures replace most CFLs. UL classified for both direct and bypass installations.

PL:EDGE
SERIES



PATENTED

PinFit



Versatility In Installation

The revolutionary modular socket design of the PinFit PL Omni allows for easy switching of the lamp socket from G24q to G24d in the field, offering great installation versatility.

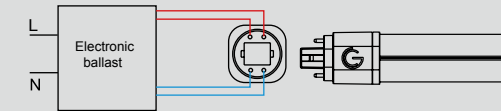
Simply use a screwdriver to pry open the buckle and remove the modular socket and the transformation from a 4 pins lamp to a 2 pins lamp is done.

Optimal Field Flexibility

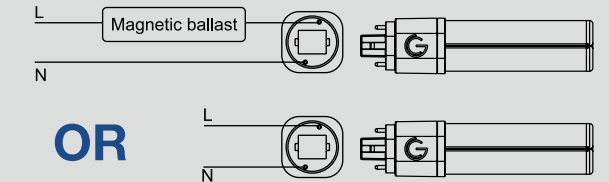
An embedded universal driver allows the PinFit PL Omni to perform in electronic ballast at 4 pins mode, and magnetic ballast or no-ballast environments at 2 pins mode, providing optimal field flexibility for both direct and bypass installations with only one lamp.

Greatly reduce the cost of stock management and installation labor. No more headaches for the unexpected ballast compatibility issues or different wiring needs in the field.

DIRect Installation - Default 4 Pins Mode - Electronic Ballast

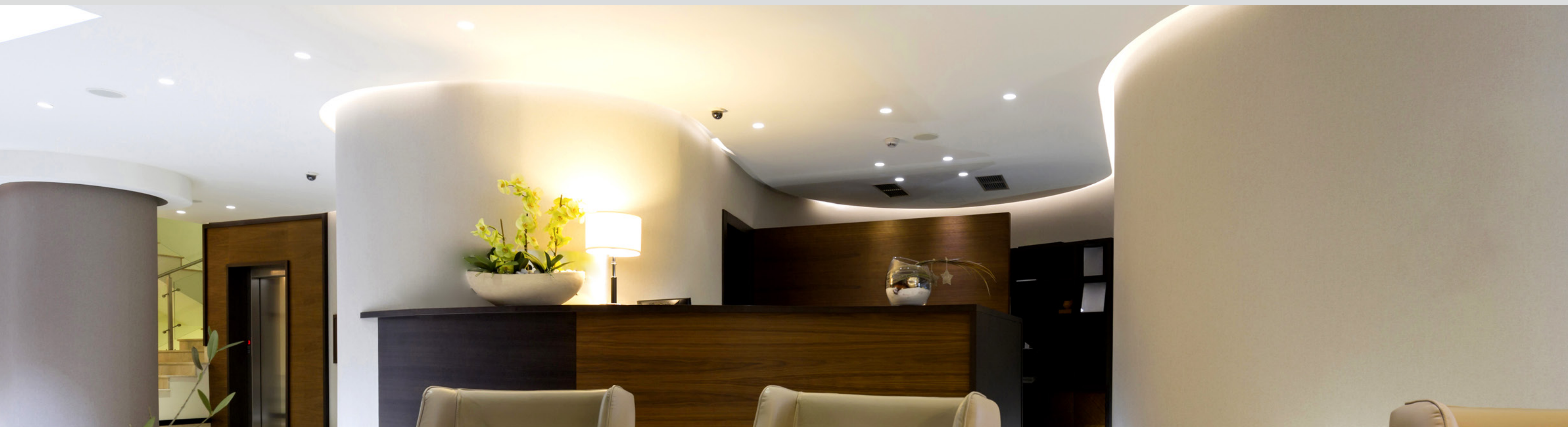
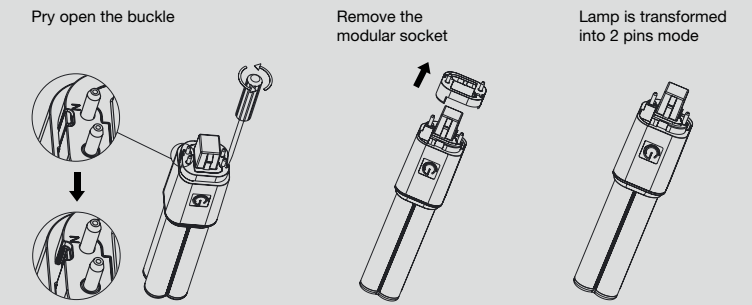
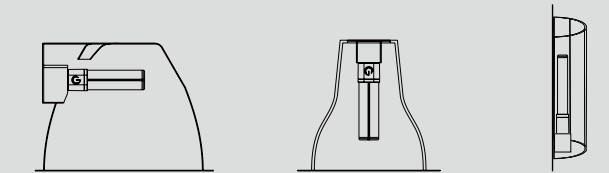


DIRect or BYPass Installations - 2 Pins Mode - Magnetic Ballast or No Ballast



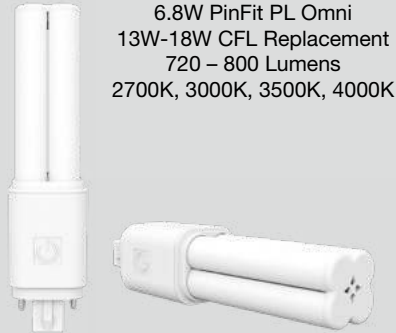
Omnidirectional Lighting

The lamps can be installed either vertically or horizontally with 360° omni-directional light distribution, creating a uniform and pleasant lighting effect equivalent to fluorescent lamps.



Industry Compatibility

The series of lamps are available in 6.8W and 9W models, four color temperatures of 2700K, 3000K, 3500K and 4000K options, and are suitable for replacing most 13W-26W CFLs with G24d, GX24d, G24q and GX24q bases. All the lamps are UL classified for both direct and bypass installations, with an L70 rated lifetime of 50,000 hours and a 5-year warranty guaranteed.



GREENCREATIVE

Your Partner for Professional Lighting Solutions