



GREENCREATIVE



Select Kelvin

PATENTED



PinFit

Evolution in Retrofitting



Evolution in Retrofitting

A patented modular socket design and embedded universal driver make the PinFit suitable for any PL Lamp retrofit application.

PinFit PL Omni's proprietary modular socket design allows for easy switching of the lamp socket from G24q (4 pin) to G24d (2 pin) in the field for installation versatility. An embedded universal driver allows the lamp to perform with electronic ballasts, magnetic ballasts, or no-ballast environments, providing optimal field flexibility. With the patented modular socket design, you can rest assured that PinFit PL Omni will work in any application. Eliminate ballast compatibility issues, greatly reduce the time to audit a space, and optimize stock management costs.

Both selectable CCT and dedicated CCT product options are available in the family.



Select Kelvin



PinFit

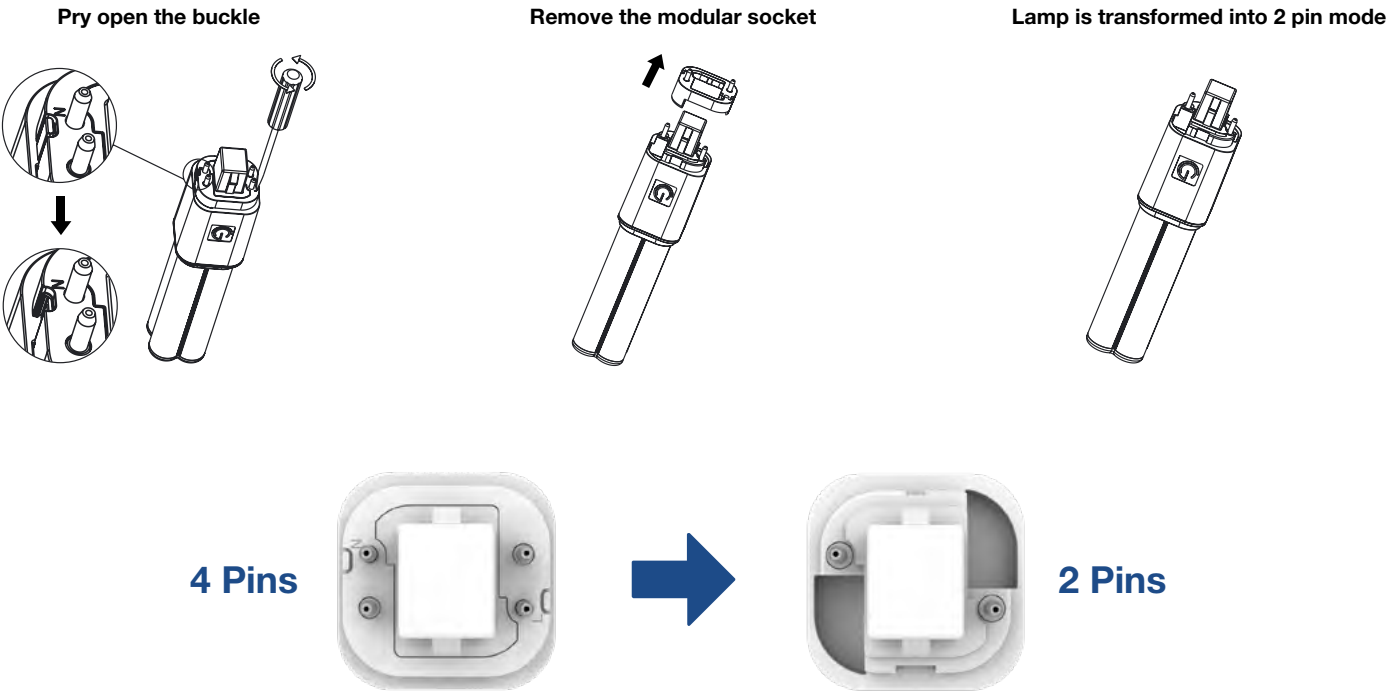




Versatility in Installation

The revolutionary modular socket design of the PinFit PL Omni allows for easy switching of the lamp socket from G24q (4 pin) to G24d (2 pin) in the field, offering ultimate installation versatility.

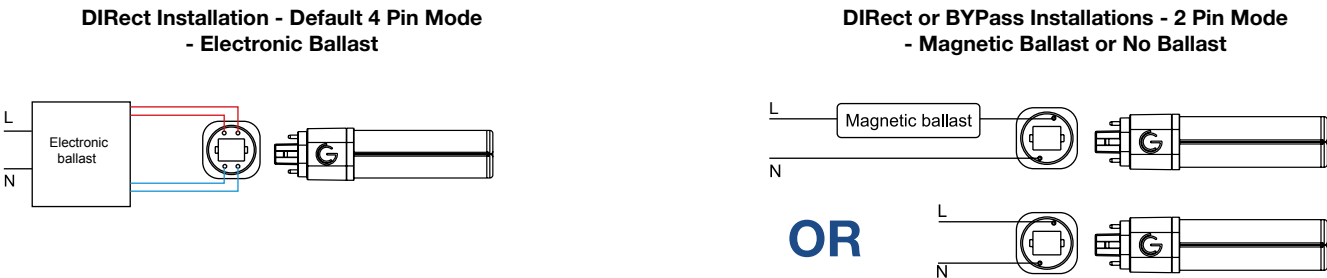
Simply use a screwdriver to pry open the buckle to remove the standard 4 pin modular socket, transforming from a 4 pin to a 2 pin compatible lamp in seconds.



Optimal Field Flexibility

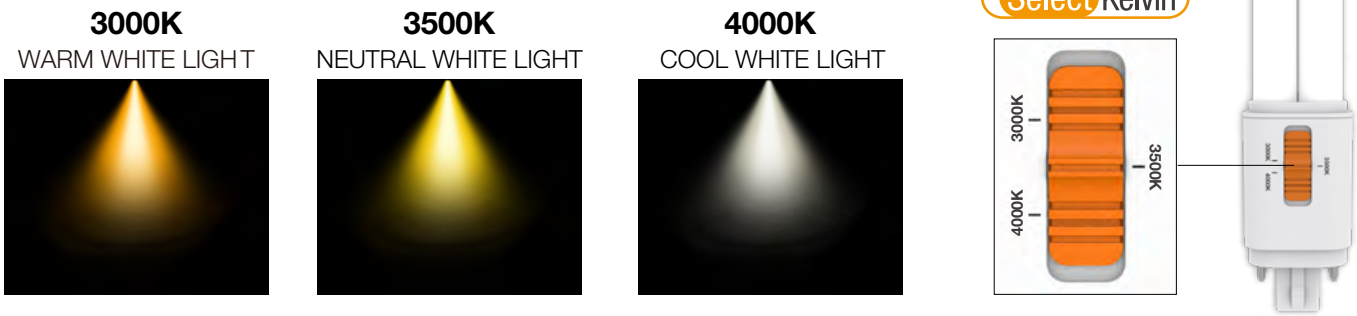
An embedded universal driver allows the PinFit PL Omni to perform with electronic ballasts at 4 pin mode, and magnetic ballasts or no-ballast environments at 2 pin mode, providing optimal field flexibility for both DIRect and BYPass installations with only one lamp.

Eliminate ballast compatibility issues, greatly reduce the time to audit a space, and optimize stock management costs.



Selectable CCT Or Dedicated CCT Options

In addition to dedicated CCT models, PinFit series includes also selectable CCT models for even greater flexibility. SelectKelvin technology enables easy selection of three color temperatures from 3000K, 3500K, and 4000K in the field, creating customized ambience and adapting to the mood of the space with just the flip of a switch.



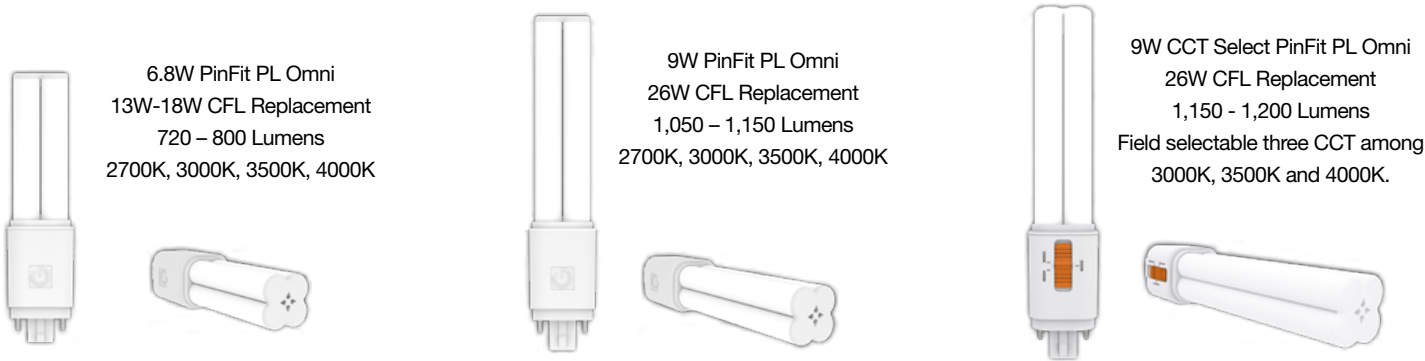
Omnidirectional Lighting

The lamps can be installed either vertically or horizontally with 360° omni-directional light distribution, creating a uniform and pleasant lighting effect equivalent to fluorescent lamps.



Industry Compatibility

The series of lamps are available in 6.8W and 9W models for replacing most 13W-26W CFLs with G24d, GX24d, G24q and GX24q bases. Options of either dedicated CCT or field selectable CCT versions meet your specific lighting design requirements in each project. All the lamps are UL classified for both direct and bypass installations, with an L70 rated lifetime of 50,000 hours and a 5-year warranty guaranteed. Optional 10-year extended warranty is also available.





GREENCREATIVE

Your Partner for Professional Lighting Solutions

