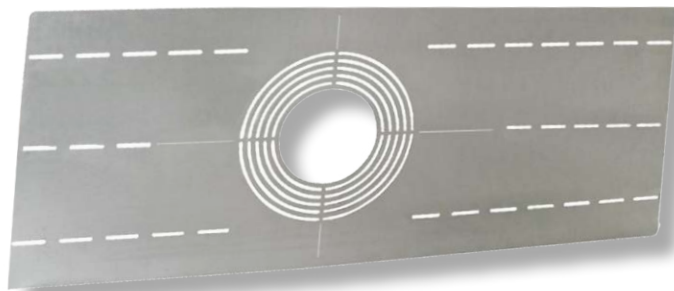
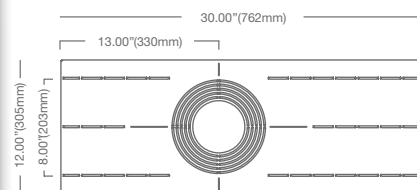


STUD/JOIST NEW CONSTRUCTION PLATE





PRO



DIMENSIONS

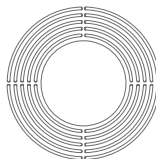
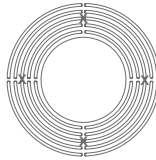
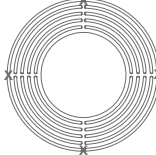


Ref.:#DS235-NCPLATE

-  **New construction plate for stud/joist mounting**
-  **Removable circular knockouts**
-  **Fits up to 24" stud/joist spacings**
-  **Offset slotted openings for irregular stud/joist spacings**

RECOMMENDED USE

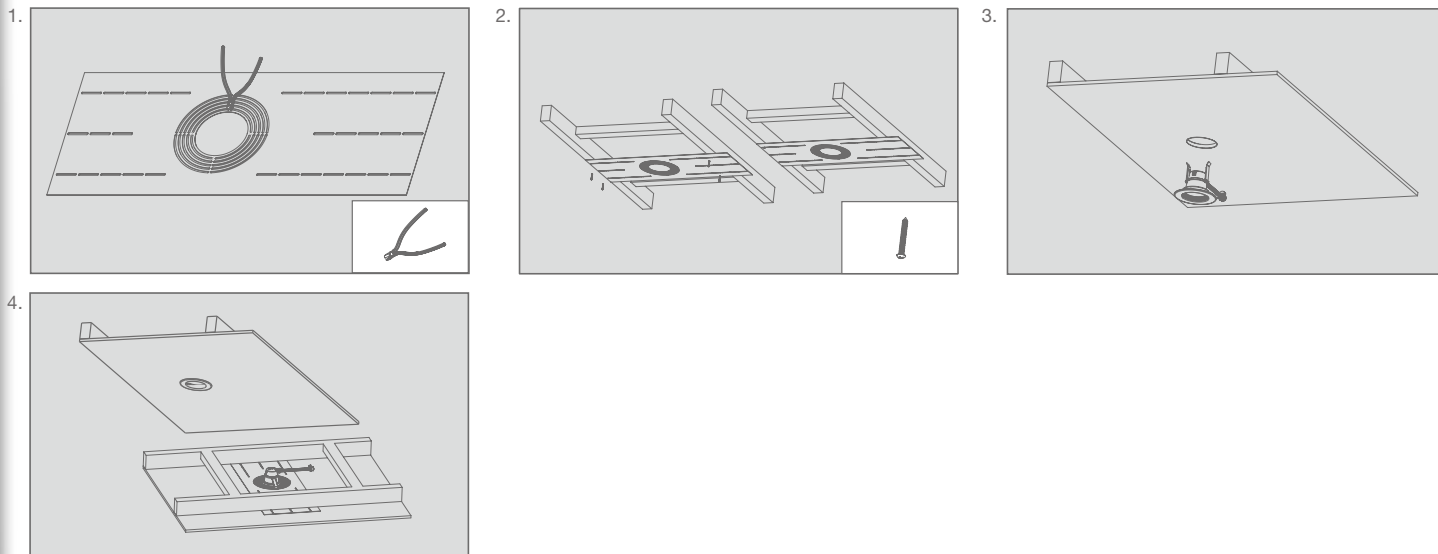
THINFIT & INNOFIT series

Compatible Products	Circular Knockout (CKO) Instructions
THINFIT 4" 8.5DLNC4DIM/xxx INNOFIT 4" 14CDLA4/xxx/277V	 <p>Keep all CKOs</p>
THINFIT 6" 11.6DLNC6DIM/xxx INNOFIT 6" 21CDLA6/xxx/277V	 <p>Remove CKOs #1, #2 & #3</p>
INNOFIT 8" 27CDLA8/xxx/277V	 <p>Remove all CKOs</p>

Where xxx means 818-965 which indicates CRI and color Temperature

STUD/JOIST NEW CONSTRUCTION PLATE

INSTALLATION GUIDE



Step 1. Using cutting pliers, remove any CKO sections necessary to install the downlight. (fig. 1)

Step 2. Nail or screw the NCPLATE to the ceiling's studs/joists. Note NCPLATE allows a maximum spacing of 24". (fig. 2)

Step 3. Make appropriate electrical connection if required.

Step 4. Follow appropriate downlight installation instruction to complete the installation. (fig. 3 & 4)

SPECIFICATIONS

Product

97984

Model

NCPLATE

Type

New Construction Plate for stud/joist mounting