



# Sky-High Savings for Downtown Austin

Ashton Austin — Austin, TX

## Background

Ashton Austin, located near the heart of downtown Austin, is a multi-family, luxury high-rise built during the city's 2006-2010 skyscraper boom. The 36-story building opened in 2009 and stands 413 feet tall. It sits along the shores of the Colorado river and provides magnificent views of the nearby Hill Country and Lady Bird Lake.

## The Situation

With many of the building's common areas requiring 24-hour lighting, the Ashton maintenance team sought to reduce energy costs and at the same time take advantage of a local utility rebate program. The existing lighting relied mostly on inefficient legacy light sources and contributed to unnecessarily high energy and maintenance costs. After learning of the savings associated with LED lighting, the tenants also decided to make the switch to lower their own unit's monthly utilities.



GREENCREATIVE

## Project Summary

### Lamp Types



### Total Quantity Replaced

**8472** Lamps

### Scope of Retrofit

## Housing Units & Common Areas

### Savings

**Over \$38,284 / year**

**“The results of this project were stunning, with improved CRI and incredible efficiency gains. This amazing Austin skysrise has become a more sustainable and attractive building.”**

-Lighting Coordinator at Ashton Austin



## The Solution

The maintenance team chose GREEN CREATIVE lamps for their exceptional efficacy, color rendering and lifetimes. Over the course of just 6 weeks, the maintenance team retrofitted over 8,000 traditional incandescent, halogen and compact fluorescents with GREEN CREATIVE's PL, BR, PAR, A19 and Candle LED lamps.

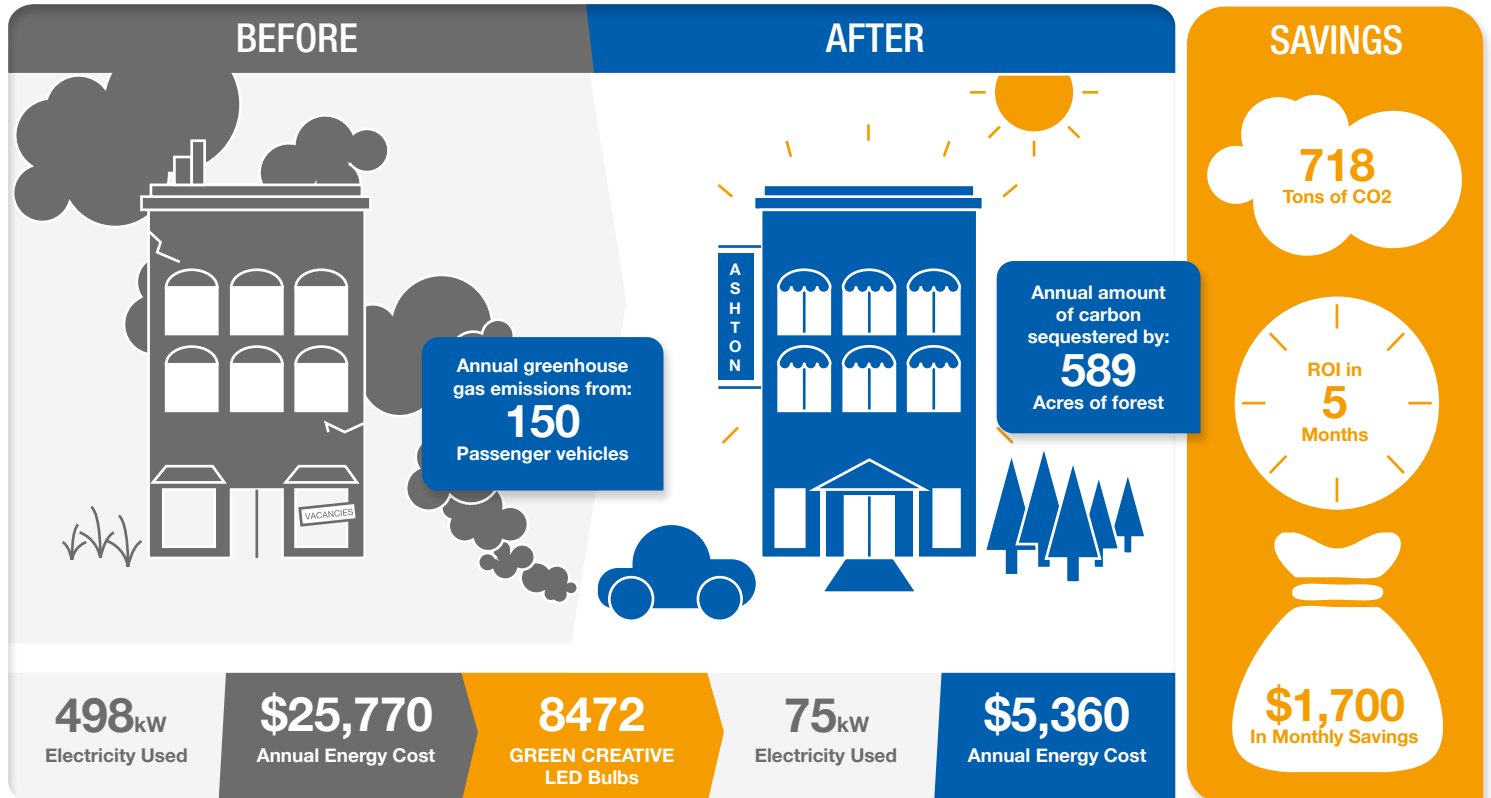
After switching to GREEN CREATIVE's energy efficient lighting solutions, the Ashton Austin expects its annual lighting utilities to decrease from over \$25,000 to less than \$5400.\* With lifetimes ranging from 25,000-40,000 hours, the long-lasting LED lamps will save the building and tenants an additional \$17,870 in lamp replacement costs

each year.\*\* In total, the Ashton Austin will realize annual savings upwards of \$38,284.

Using GREEN CREATIVE products enabled the Ashton Austin to obtain rebates for the project from a local utility. In total, the building received over \$10,000 in rebates, helping to shorten the ROI period to just 5 months.

\*Based on cost of \$0.11/kWh. Hours of operation based on 24hrs/day common areas, 6hrs/day units.

\*\*Existing lamp wattages based on equivalent light source. Replacement lamp costs based on retail prices.



Environmental figures based on EPA equivalence per kWh of energy



[www.greencreative.com](http://www.greencreative.com)  / GREENCREATIVELED  / GClightingLED  / GREEN CREATIVE

GREEN CREATIVE - 1200 Bayhill Drive, Suite 220 - San Bruno, CA 94066 - Tel / Fax: (866) 774-5433 - info@greencreative.com