

A19 9W DIM. TITANIUM LED CRI^{SP} SERIES



9W REPLACES



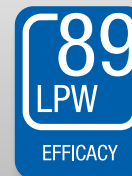
**60W
Inc.**

80% Energy Savings

PRO



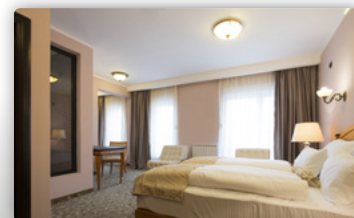
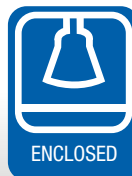
- Meets JA8 and TITLE 20 Tier I
- Exceptional color rendering CRI 92
- Richer reds and natural skin tones (R9 70, R13 95)
- High efficacy 89 LPW in Soft White
- Suitable for use in totally enclosed fixtures



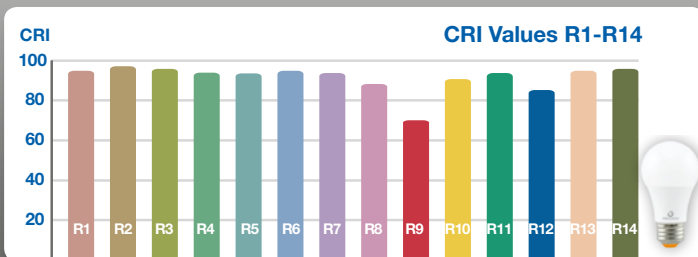
A19 PRODUCT FEATURES

Suitable for Enclosed Fixtures

This A19 is suitable for use in totally enclosed fixtures and capable of operating in a broad range of applications. Whether it is installed in fully enclosed flushmounts or sconces, this lamp's advanced thermal design ensures optimal performance over the course of its lifetime.



Exceptional Color Rendering



THE CRI^{SP} SERIES A19 9W lamp features a typical CRI 92, R9 70 and R13 95, providing crisp and vibrant colors across the whole spectrum. Its exceptional R9-R14 values (R9 & R13) provide redder reds, natural looking skin tones and whiter whites. In addition, this lamp's color temperatures fall within a 4-step Macadam ellipse to ensure minimal color deviation across lamps.

A19 9W DIM. TITANIUM LED CRI^{SP} SERIES



APPLICATIONS

General Lighting



Downlighting



Uplighting



Ref.#: DS230-A19-9W-070519

SPECIFICATIONS

Product Model	28395 9A19DIM/927
Type	A19
Base	E26
Power (W)	9
Voltage - Frequency	120V 60Hz
Color Temp. (ANSI)	Soft White 2700K
CRI (Ra) (typ.)	92
R9 / R13 (typ.)	70 / 95
Typical lumens (lm)	800
Efficacy (LPW)	89
Beam Angle	240°
Dimmable	Yes**
Power Factor	0.9
Rated Lifetime - L70 (hrs.)	30,000
Dia. x MOL	2.44"x4.45"(62x113mm)
Weight (lb. / g)	0.25lb. / 113g

* Suitable for use in totally enclosed fixtures

** List of tested dimmer switches available on website

*** Suitable for damp locations. Not for use where directly exposed to weather or water