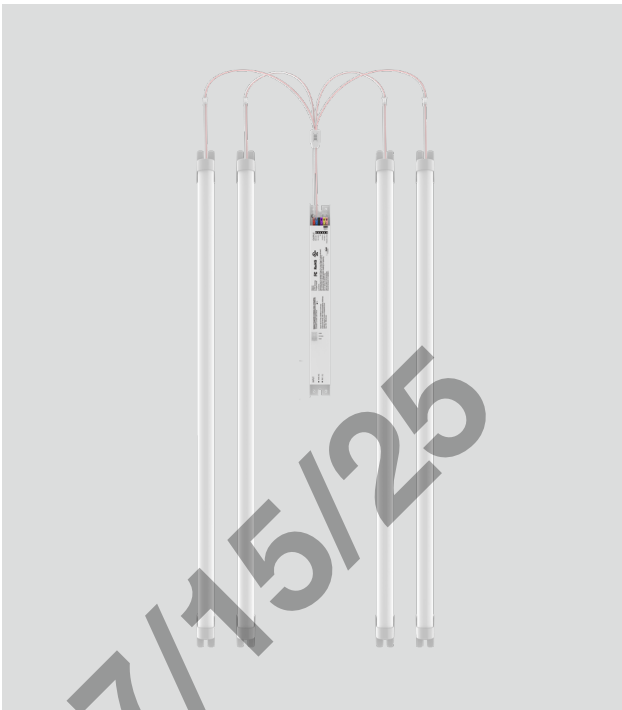


Project Name:	Type:
Part Number:	Date:

UNIVERSAL LIGHT BAR KIT

SPECIFICATION FEATURES

- Universal Light Bar Kit designed for cost effective and energy efficient LED linear retrofit applications
- Plastic Housing with Polycarbonate Frosted Lens for durability and lightweight construction
- Light Bars feature quick connectors for efficient installation and labor savings
- Fits seamlessly between pre-existing sockets eliminating need to remove pre-existing sockets
- Magnets fixed on back of light bars and drivers for alignment with self-tapping tek screws included to secure light bars and drivers to surface
- Available in 1 to 4 light bar kit options with 2', 3' and 4' lengths and lumen outputs 1800lm, 2700lm, 3600lm
- Field Lumen Selectable driver options
- Fixed 4000K Cool White color temperature
- Exceptional efficacy up to 163 LPW
- 0-10V dimmable (dims to 10%)
- Controls option for added energy savings and controllability
- Light bar ambient temperature: -4°F to 122°F (-20°C to 50°C)
- Calculated lifetime (L70) up to: 100,000hrs
- 5 year limited warranty / Optional 10 year available (see EXTENDED WARRANTIES table for information)
- Suitable for use in totally enclosed fixtures and damp locations

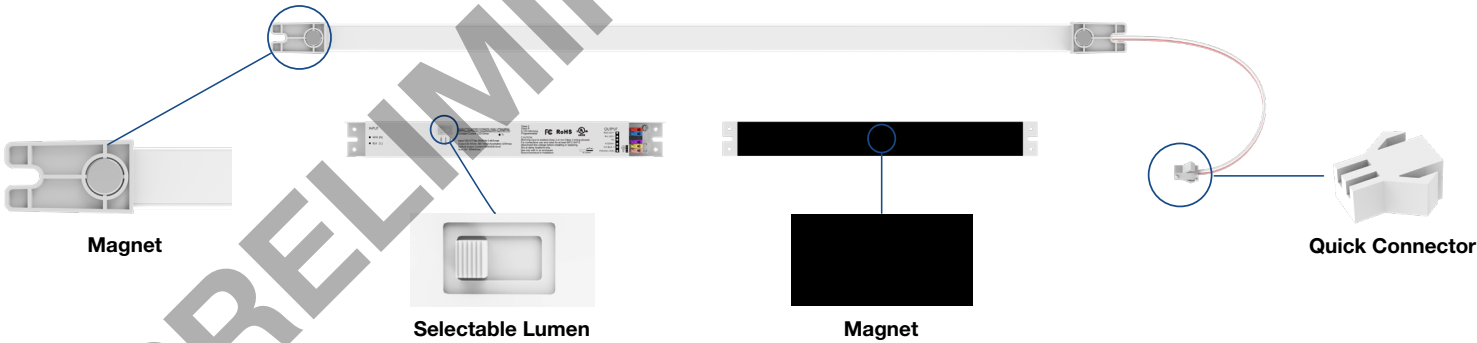


DIGITAL NAVIGATION Explore the spec sheet through the links below

ORDERING GUIDE	TECHNICAL INFORMATION
LINE DRAWINGS	ACCESSORY ORDERING INFORMATION
INSTALLATION	SALES KITS REFERENCES
LOGISTIC INFORMATION	EXTENDED WARRANTIES



FOCUS FEATURE



UNIVERSAL LIGHT BAR KIT

ORDERING GUIDE

PART #					Example: 20LB/2F/840/U/A1
Series ¹	CCT	Driver	Light Bar Qty	Warranty	Sensors
20LB/2F² 1,800lm Light Bar, 2FT	840 4000K	U 120-277V Universal	A1 One bar	BLANK 5YR Warranty 10YR 10YR Warranty	BLANK No Sensor MWS Microwave Sensor
30LB/3F² 2,700lm Light Bar, 3FT			A2 Two bars		
40LB/4F 3,600lm Light Bar, 4FT			A3 Three bars		
			A4 Four bars		

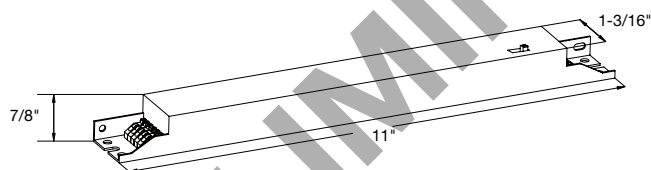
FOOTNOTES: 1. Refer to [SALES KITS REFERENCES](#) for more details. 2. Contact factory for lead-time of 3ft bars (kit of 1, 2, 3, and 4) and 2ft bars (kit of 3 and 4).

TECHNICAL INFORMATION

Part #	GC Kit Model No.	Nominal Bar Length	Bar Quantity	Driver Setting	Driver Setting - High			Driver Setting - Medium			Driver Setting - Low		
					Power (W)	Lumen Output (LM)	Light Efficacy (LPW)	Power (W)	Lumen Output (LM)	Light Efficacy (LPW)	Power (W)	Lumen Output (LM)	Light Efficacy (LPW)
38702	20LB/2F/840/U/A1	2FT	1	11W	11	1,800	164	N/A	N/A	N/A	N/A	N/A	N/A
38703	20LB/2F/840/U/A2	2FT	2	22/18/14W	22	3,600	164	18	2,900	161	14	2,300	164
38704	20LB/2F/840/U/A3	2FT	3	33/25/18W	33	5,400	164	25	4,100	164	18	2,900	161
38705	20LB/2F/840/U/A4	2FT	4	40/36/32W	40	6,500	163	36	5,900	164	32	5,200	163
38706	30LB/3F/840/U/A1	3FT	1	16.5/14/11W	16.5	2,700	164	14	2,300	164	11	1,800	164
38707	30LB/3F/840/U/A2	3FT	2	33/25/18W	33	5,400	164	25	4,100	164	18	2,900	161
38708	30LB/3F/840/U/A3	3FT	3	40/36/32W	40	6,500	163	36	5,900	164	32	5,200	163
38709	30LB/3F/840/U/A4	3FT	4	40/36/32W	40	6,500	163	36	5,900	164	32	5,200	163
38710	40LB/4F/840/U/A1	4FT	1	22/18/14W	22	3,600	164	18	2,900	161	14	2,300	164
38711	40LB/4F/840/U/A2	4FT	2	40/36/32W	40	6,500	163	36	5,900	164	32	5,200	163
38712	40LB/4F/840/U/A3	4FT	3	40/36/32W	40	6,500	163	36	5,900	164	32	5,200	163
38713	40LB/4F/840/U/A4	4FT	4	40/36/32W	40	6,500	163	36	5,900	164	32	5,200	163

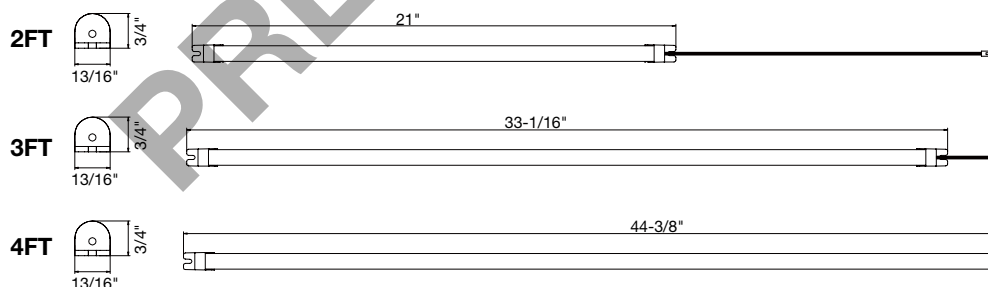
LINE DRAWINGS

Driver Dimension



Weight	
Driver	0.55lbs


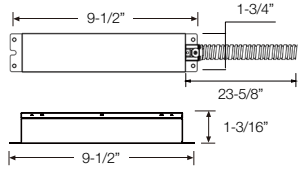
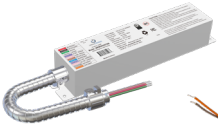
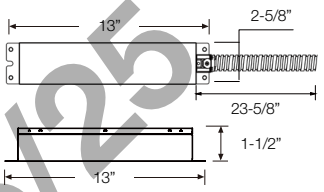

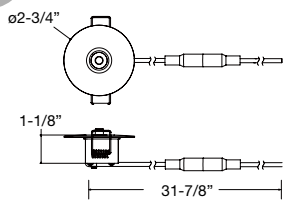

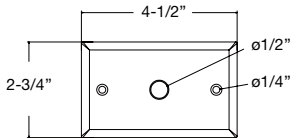

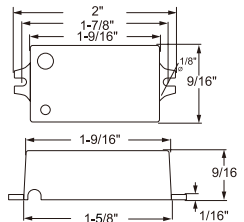
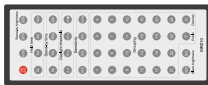
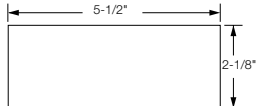
Bar Dimension



Weight	
20LB/2F/840	0.11lbs
30LB/3F/840	0.18lbs
40LB/4F/840	0.24lbs

Note: All rights reserved. All sizes and specifications are subject to change at any time without notice.

UNIVERSAL LIGHT BAR KIT

ACCESSORY ORDERING INFORMATION				
Product	Model	Description	Pictures	Dimensions
37934	8EMINVERTER	California Title 20 Compliant 8W Emergency LED Inverter (Field Installation)		
38096	24EMINVERTER	California Title 20 Compliant 24W Emergency LED Inverter (Field Installation)		
37937	CEILTESTACC	Remote Round Ceiling Mount Test Switch and Indicator Light (Field Installation)		
37938	WALLPLATE	Single Gang Jbox Face Plate (Field Installation)		
MWS	MWS	Microwave Sensor (Field Installation)		
MWSRC	MWSRC	Microwave Sensor Remote Controller		

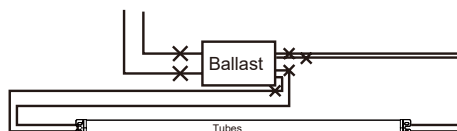
Note: All rights reserved. All sizes and specifications are subject to change at any time without notice.



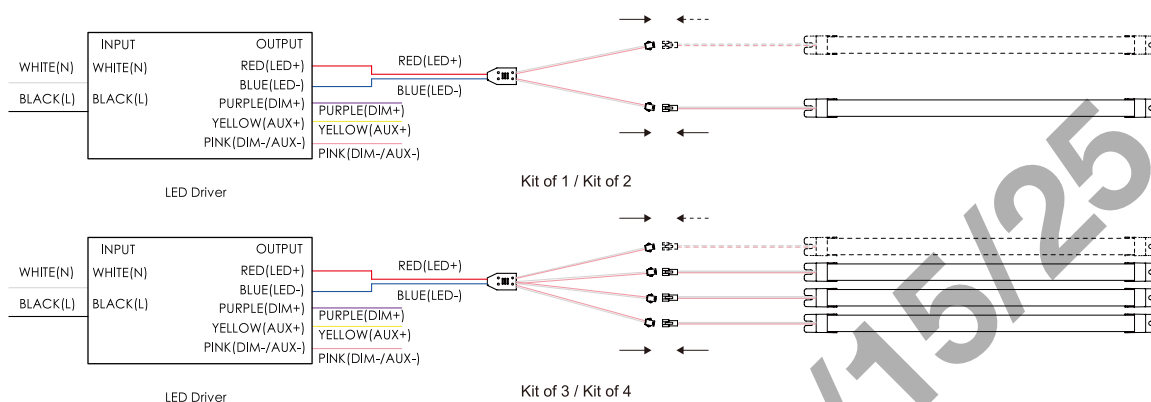
UNIVERSAL LIGHT BAR KIT

INSTALLATION

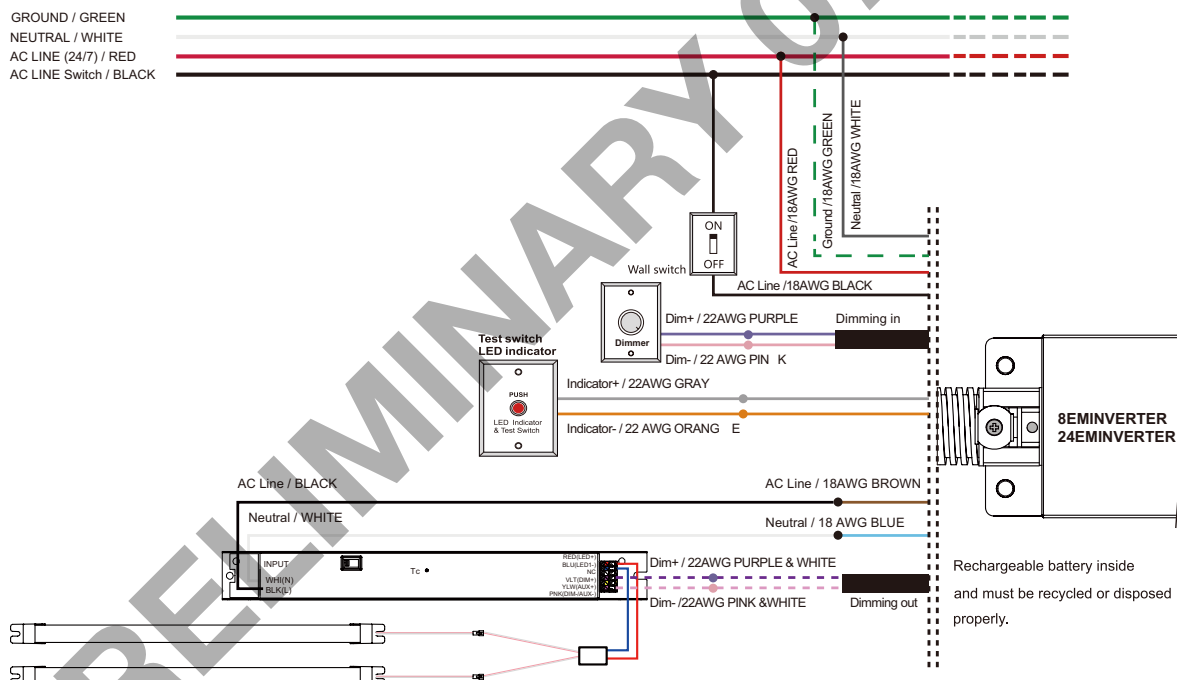
Light Bar Installation



Cut all wires connecting ballast.



Emergency Inverter Installation



Type	Model	Lumen output level at EM mode - Kit of 1		Lumen output level at EM mode - Kit of 2/3/4	
		8EMINVERTER	24EMINVERTER	8EMINVERTER	24EMINVERTER
Light Bar	20LB/2F/840	1,300lm	1,800lm	1,300lm	3,900lm
	30LB/3F/840	1,300lm	2,700lm	1,300lm	3,900lm
	40LB/4F/840	1,300lm	3,600lm	1,300lm	3,900lm



UNIVERSAL LIGHT BAR KIT

INSTALLATION

Accessory-2in1 Test Switch with Indicator Light (Supplied with the EM INVERTER)

1. Pre-open a 1/2 " hole on the fixture housing and fix the test button on the fixture housing (Figure 1-1).
2. Wire the test button to EM inverter indicator & Test button wires (Figure 1-2).



Figure 1-1

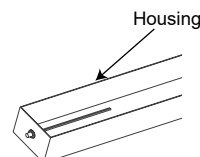


Figure 1-2

Indicator Light:

Red On: Charging/ Fully Charged

Off: Emergency Mode/Open Circuit / LED Load Exceeds Nominal Emergency Power 2-Second Slow Flashing: indicates the need for charging or compatibility testing in standby mode. If it continues to flash slowly after being charged within 24 hours, it suggests incompatibility with fixtures.

0.5-Second Fast Flashing: Signifies a failure, indicating a lack of connection to power or load. It is recommended to check the wiring in such cases.

Test switch:

Activating the test switch while the main power supply is on will cause the Emergency Conversion kit to enter emergency mode. Conversely, it will enter charging mode if the test switch is not pressed.

To exit the emergency mode, press the test switch for a duration of 3 seconds while in emergency mode.

Accessory-Single Gang Jbox Face Plate (Optional)

1. Attach the indicator to the Single Gang Jbox Face Plate (refer to Figure 2-1)
2. Connect the indicator wire to the inverter located within the junction box (not included)
3. Securely fasten the plate onto the junction box using 2 screws (refer to Figure 2-2).

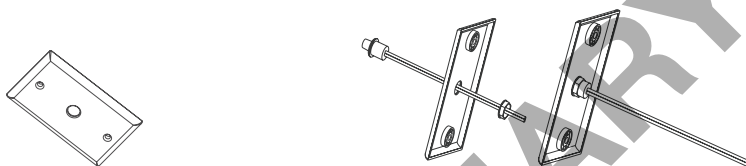


Figure 2-1

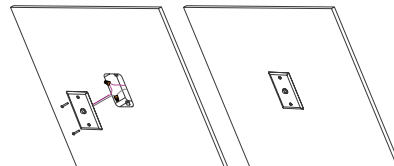


Figure 2-2

Accessory - Remote Round Ceiling Mount Test Switch and Indicator Light (Optional)

1. Disconnect the quick connector of the Remote Round Ceiling Mount Test Switch and indicator Light (refer to Figure 3-1).
2. Create a hole in the ceiling with a diameter between 2" and 2 3/8". then route the indicator cord to the inverter within the junction box (not included) and reconnect the quick connector (refer to Figure 3-2).
3. Pinch the 2 springs, insert them into the ceiling hole, and release the springs (refer to Figure 3-3).

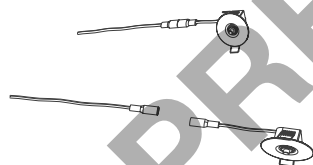


Figure 3-1

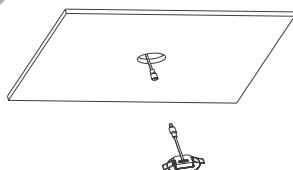


Figure 3-2

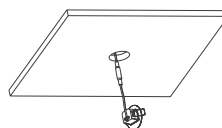


Figure 3-3



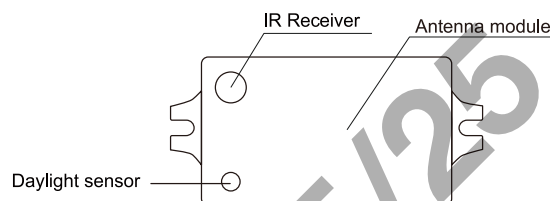
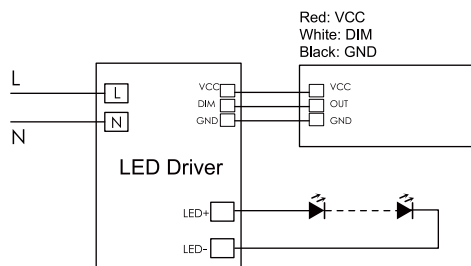
UNIVERSAL LIGHT BAR KIT

INSTALLATION

Accessory – Microwave Sensor (Optional)

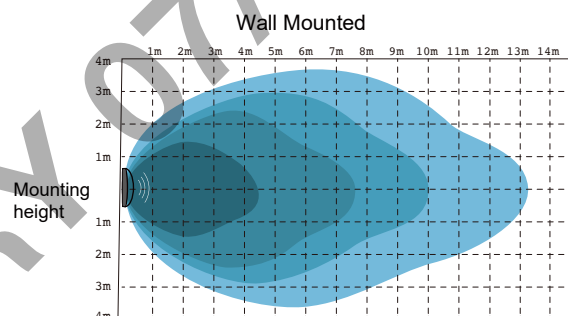
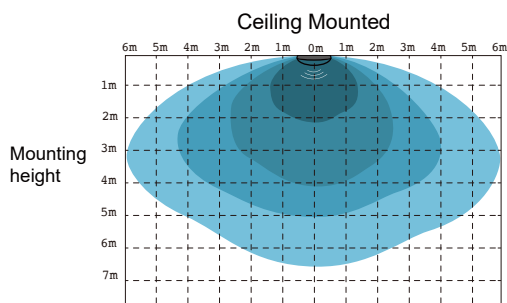
- 5.8GHz microwave motion sensor build in 2.4GHz RF module
- Grouping and synchronize function for different lights
- Tri-level dimming output
- Daylight sensor build in
- Remote controller setting

Wiring diagram



Detection coverage

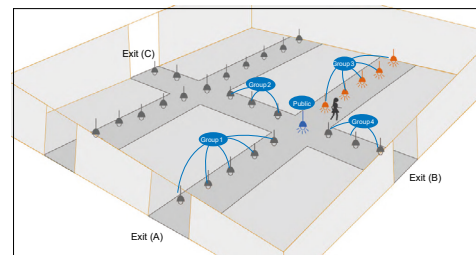
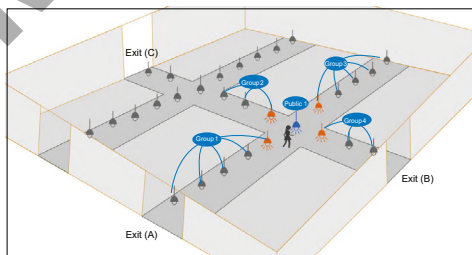
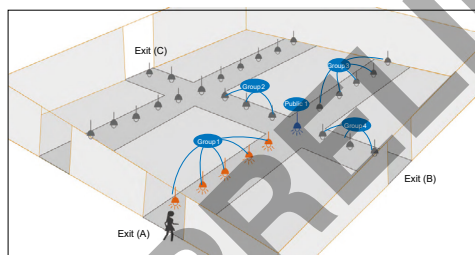
Sensitivity : 25% 50% 75% 100%



2.4GHz RF Grouping Function Introduce

Remark:

1. Point to point RF communication distance around 15m.
2. Public sensor will not make the 2nd transfer the synchronize signal to the next device when it was trigger by the near by motion sensor.



1. When the group 1 detect any motion, the sensor will turn on and transfer synchronize signal to the whole group, it will trigger the public sensor 1 which close to the group 1, but the public sensor 1 will not transfer the signal to others, so you can see the group 2, group 3 and group 4 will not turn on.

2. When the public sensor detect motion directly, it will transfer the synchronize signal one time only, you can see the sensor near by the public1 will turn on but those next will not.

3. When group 3 sensor detect motion, it will turn on and transfer synchronize signal at the same time, the group 3 sensors will turn on and the near by public sensor 1 will trigger and turn on, but it will not transfer synchronize signal to others, those sensors near by the public sensor 1 will not turn on.

UNIVERSAL LIGHT BAR KIT

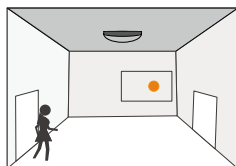
INSTALLATION

Accessory – Microwave Sensor (Optional)

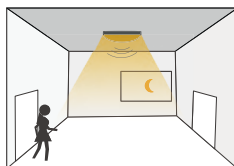
Application

1. ON/OFF function:

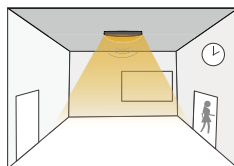
1.) The daylight threshold is set to "5Lux/25Lux/100Lux", Stand-by period is set to "0s".



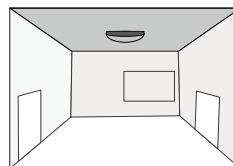
With sufficient daylight, even when motion detected, light remains OFF.



With insufficient ambient brightness, light dims to 100% when motion was

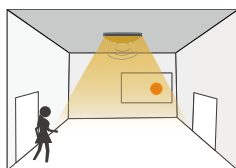


Light keeps on 100% within the holdtime.

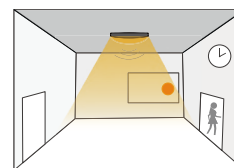


After the last detection and the preset hold time elapsed, light OFF.

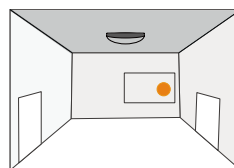
2.) The daylight threshold is set to "Disable", Stand-by period is set to "0s".



When motion is detected, the sensor will switch on the light to 100% brightness.



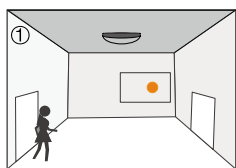
After people leave the detection area, light remains 100% brightness within hold



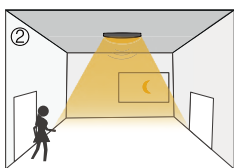
After the last detection and the present hold time elapsed, light OFF.

2. Dimmable control/Corridor function:

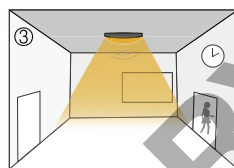
The daylight threshold is set to "5Lux/25Lux/100Lux", stand-by period is set to "10s/10min/24h".



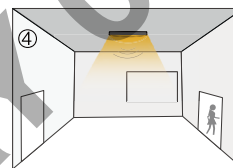
With sufficient daylight, even when motion detected, light remains OFF.



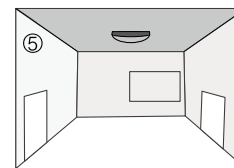
With insufficient ambient brightness, light dims to 100% when motion was



Light keeps on 100% within the holdtime.



Light dims to standby level if no motion detected after holdtime.



After the stand-by period, light OFF.

Accessory – Remote Controller (Optional)

Key ³	Function
ON/OFF	Setting the light permanent ON or OFF without motion sensor mode.
Auto	Turn on the sensor mode
Hold time	The period of light keeping 100% brightness after moving objects leave the detection area.
Daylight threshold	Definition of the ambient brightness; only when the ambient brightness is lower than the preset specific lux amount, the sensor will work; when it's preset as "disable", the sensor will detects motion regardless the ambient brightness.
Sensitivity	Detection range, movement will be detected and able to trigger the sensor. 100% detection range is also known as the strong sensitivity.
Stand-by period	The period of light keeping low output before it's completely switched off. When it's preset as "+∞", the light always keep at low output if no movement in the detection area and doesn't turn off.
Stand-by dimming level	The dimming level in the stand-by period.
Grouping	To set up a group which the sensors are on power and receive the remote controller signal. User can set 24 groups for grouping, no sensor qty limited in one group.
Public	Set the sensor as a public device, public device will be triggered by any synchronize signal from any groups, but will not relay signal to others. It is suitable to set the crossing device as public device.
Dismiss	Override the grouping function
Salve Brightness	Set the slave lights brightness level, users can set the lights far away from the people movement areas in a lower brightness to save energy. When set 100%, the slave lights will turn on at 100% when it receive the RF signal, to get high performance. When set 50%, the slave lights will turn on at 50%, and slave device will no relay the RF signals to others, to save energy.



Size (L*W*H):
5.47" x 2.12" x 0.39"
Please use CR2025
battery

FOOTNOTES: 3. Remote Setting Tips: When press any button, if the light is flickering one time, means the setting is successful.



UNIVERSAL LIGHT BAR KIT

SALES KITS REFERENCES

Part #	GC Model No.	GC Light Bar Model	Light Bar Quantity
38702	20LB/2F/840/U/A1	20LB/2F/840	1
38703	20LB/2F/840/U/A2	20LB/2F/840	2
38704	20LB/2F/840/U/A3	20LB/2F/840	3
38705	20LB/2F/840/U/A4	20LB/2F/840	4
38706	30LB/3F/840/U/A1	30LB/3F/840	1
38707	30LB/3F/840/U/A2	30LB/3F/840	2
38708	30LB/3F/840/U/A3	30LB/3F/840	3
38709	30LB/3F/840/U/A4	30LB/3F/840	4
38710	40LB/4F/840/U/A1	40LB/4F/840	1
38711	40LB/4F/840/U/A2	40LB/4F/840	2
38712	40LB/4F/840/U/A3	40LB/4F/840	3
38713	40LB/4F/840/U/A4	40LB/4F/840	4

LOGISTIC INFORMATION

Model	Master Carton			Pallet		
	Carton Qty	Carton Dimensions (LxWxH)	Carton Weight	Carton / Pallet	Dimensions (LxWxH)	Pallet Weight
20LB/2F/840/U/A1	24	22-3/16" x 12" x 12-7/16"	22.6 lbs	42	47-3/16" x 39-3/8" x 95-1/2"	989 lbs
20LB/2F/840/U/A2	24	22-3/16" x 12" x 12-7/16"	26.6 lbs	42	47-3/16" x 39-3/8" x 95-1/2"	1,158 lbs
20LB/2F/840/U/A3	24	22-3/16" x 18-5/16" x 12-7/16"	34.5 lbs	28	47-3/16" x 39-3/8" x 95-1/2"	1,007 lbs
20LB/2F/840/U/A4	24	22-3/16" x 18-5/16" x 12-7/16"	36.7 lbs	28	47-3/16" x 39-3/8" x 95-1/2"	1,068 lbs
30LB/3F/840/U/A1	24	34-5/16" x 12" x 12-7/16"	27.1 lbs	28	47-3/16" x 39-3/8" x 95-1/2"	800 lbs
30LB/3F/840/U/A2	24	34-5/16" x 12" x 12-7/16"	32.8 lbs	28	47-3/16" x 39-3/8" x 95-1/2"	957 lbs
30LB/3F/840/U/A3	24	34-5/16" x 18-5/16" x 12-7/16"	43.5 lbs	14	47-3/16" x 39-3/8" x 95-1/2"	649 lbs
30LB/3F/840/U/A4	24	34-5/16" x 18-5/16" x 12-7/16"	45.8 lbs	14	47-3/16" x 39-3/8" x 95-1/2"	681 lbs
40LB/4F/840/U/A1	12	45-11/16" x 8-5/16" x 9-7/16"	22.5 lbs	36	47-3/16" x 39-3/8" x 94-1/2"	850 lbs
40LB/4F/840/U/A2	12	45-11/16" x 8-5/16" x 9-7/16"	26.4 lbs	36	47-3/16" x 39-3/8" x 94-1/2"	990 lbs
40LB/4F/840/U/A3	12	45-11/16" x 12-7/16" x 9-7/16"	26.6 lbs	27	47-3/16" x 39-3/8" x 94-1/2"	758 lbs
40LB/4F/840/U/A4	12	45-11/16" x 12-7/16" x 9-7/16"	31.2 lbs	27	47-3/16" x 39-3/8" x 94-1/2"	881 lbs

EXTENDED WARRANTIES⁴

Product ⁵	Description
20LB/2F/840/U/Ax/10YR	10 Year warranty for 20LB/2F/840/U/A1,2,3,4
30LB/3F/840/U/Ax/10YR	10 Year warranty for 30LB/3F/840/U/A1,2,3,4
40LB/4F/840/U/Ax/10YR	10 Year warranty for 40LB/4F/840/U/A1,2,3,4

FOOTNOTES:

4. Warranty based on a maximum of 4,368 annual operating hours (per year for ten years) and exposure to a maximum fixture operating temperature of 80°F / 27°C
5. x – Refers to the bar quantity