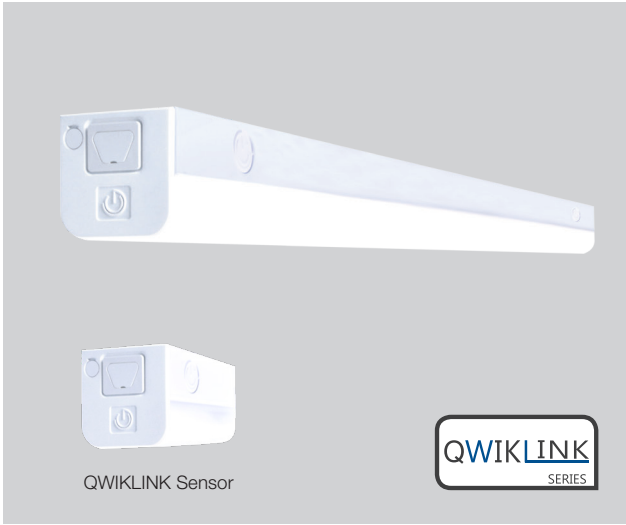


Project Name:	Type:
Part Number:	Date:

QWIKLINK 4' LINEAR STRIPLIGHT

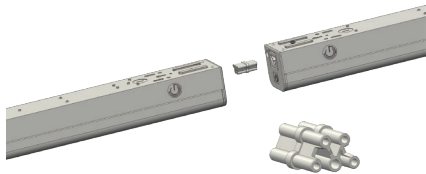
SPECIFICATION FEATURES

- **Mechanical** - QWIKLINK 4' Strip allows for quick and easy installation. Connect up to 64 linear feet with QWIKLINK Connector. Surface, Pendant or Suspension Installation. Toolless removable lens. Durable cold rolled steel white powder coated housing. Optional QWIKLINK bi-level dimming sensor available.
- **Electrical** - Universal 120-277V, 50/60Hz, 0-10V Dimmable.
- **Optical** - 120 (degree symbol) beam distribution with 10% uplight. High end PMMA Lens. 3000K, 3500K, 4000K and 5000K CCT. Minimum 82 CRI.
- **Thermal** - Rated L70 lifetime of 100,000 hours. Ambient temperature range: -4°F to 113°F (-20°C to 45°C).
- **Compliance and Warranty** - UL Listed for Damp Locations. DLC® Premium Listed. 10 year warranty.

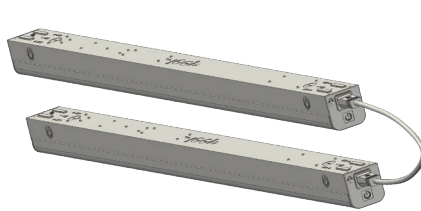


QWIKLINK Connection System

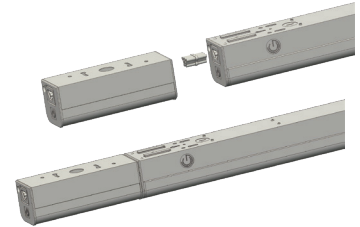
- QWIKLINK connector allows for easy and seamless connection up to 64 linear feet.
- QWIKLINK connection provides 0-10V dimming connection between fixtures
- QWIKLINK cable available in 7-15/16" & 60" lengths allowing for angled and distant fixture connections
- QWIKLINK sensor integrates with a single or multiple fixtures for occupancy and dimming controls



QWIKLINK Connector



QWIKLINK Cable



QWIKLINK Sensor

BENEFITS

- QWIKLINK technology for seamless fixture connection
- Surface mount, pendant or suspended installation
- 120-277V circuit and 0-10V dimmable
- Exceptional efficacy with 130LPW
- Extra long 100,000 hour lifetime

APPLICATIONS

- Industrial
- Commercial
- Educational
- Retail
- Stairwell and Passageway

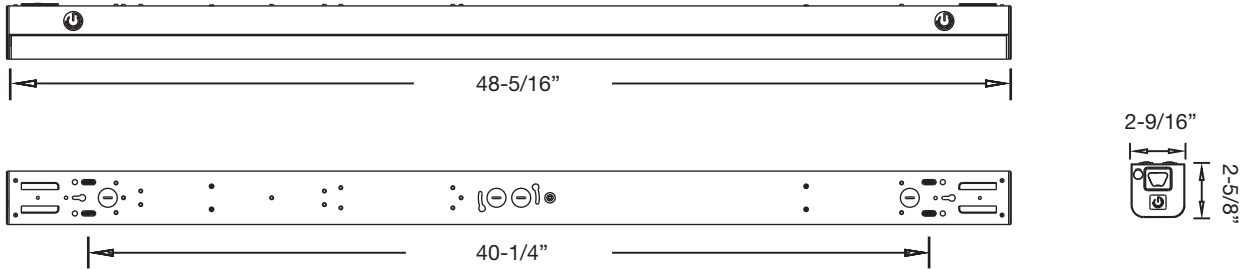
ORDERING INFORMATION

Must Select				Options (Factory Installation)
Power	CRI	CCT	Voltage	
<input checked="" type="checkbox"/> 38.5STRIPDIM 38.5W 0-10V Dimmable	<input checked="" type="checkbox"/> 8 CRI 82	<input type="checkbox"/> 30 3000K	<input checked="" type="checkbox"/> 277V/R 120-277V	<input type="checkbox"/> STEPDIM Step Dimming Driver 100/50
		<input type="checkbox"/> 35 3500K		<input type="checkbox"/> EM 10W EM Battery Backup
		<input type="checkbox"/> 40 4500K		
		<input type="checkbox"/> 50 5000K		



QWIKLINK 4' LINEAR STRIPLIGHT

LINE DRAWINGS

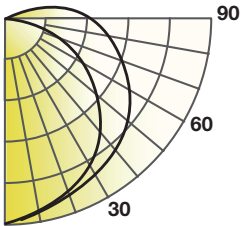


TECHNICAL INFORMATION

Dimming	Input Voltage	Input Frequency	Input Current	Input Power	THD Power	Power Factor
0-10V	120-277V	50/60Hz	330mA / 150mA	38.5W	<20%	0.9

PHOTOMETRY

38.5STRIP/840/277V/R



Lumens: 5496 lm
 Power: 38.7 W
 Efficacy: 142lm/W
 CRI: 86
 Spacing Criteria: 1.28
 Beam Angle: 123°

Candlepower Distribution		Initial Footcandles			Zonal Lumen Summary						
Angle (°)	Average (cd)	Height (ft)	Fc	Diameter (ft)	Zone	Lumens	%Fixt				
05	1471	8	103	27.7	0-30	1158	21.1				
15	1438	10	66	34.6	0-40	1916	34.9				
25	1363	12	46	41.6	0-60	3504	63.8				
35	1248	15	29	52.0	0-90	4907	89.3				
45	1098	20	16	69.3	0-120	5335	97.1				
55	919	Nominal Performance Data 38.5STRIP/8xx/277V/R									
65	718						CCT	3000K	3500K	4000K	5000K
75	501						Lumens	5000	5000	5050	5050
85	294						LPW	130	130	131	131
90	220										



QWIKLINK 4' LINEAR STRIPLIGHT

ACCESSORY ORDERING INFORMATION

Product	Model	Description	Pictures
28388	STPSENSOR	Microwave Sensor QWIKLINK Connection Module, 120-277V - Tri-level - Field Adjustable	
97881	SENSORRC	Remote Control for STPSENSOR	
28384	JBOXPLATE	J-box Cover Plate	
28385	WIRECON20	7.9" (20cm) QWIKLINK Cable	
28386	WIRECON150	5' QWIKLINK Cable	
28382	STP6CABLE	6' Aircraft Cable with Y-toggle (Set of 2 Cables Suitable for 1 Fixture)	
28383	STP10CABLE	10' Aircraft Cable with Y-toggle (Set of 2 Cables Suitable for 1 Fixture)	
28387	STPPLATE4C	Back Plate for Mechanical Connection Between Suspended; Fixtures in a Continuous Run (2 Aircraft Cables Per Fixture)	
97885	STPPLATE2C	Back Plate for Mechanical Connection Between Suspended; Fixtures in a Continuous Run (1 Aircraft Cable Per Fixture)	
97860	PC6	6' Power Cord 18/3 (Not Pre-wired to Fixture)	
97861	PC12	12' Power Cord 18/3 (Not Pre-wired to Fixture)	