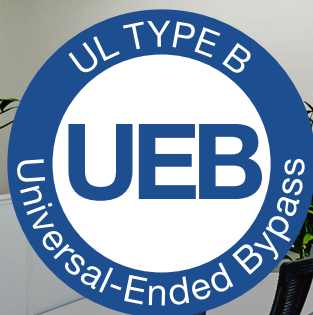




GREENCREATIVE



Select Kelvin



**CCT SELECT T5 UEB**  
**UL Type B - Single and Double Ended Bypass**

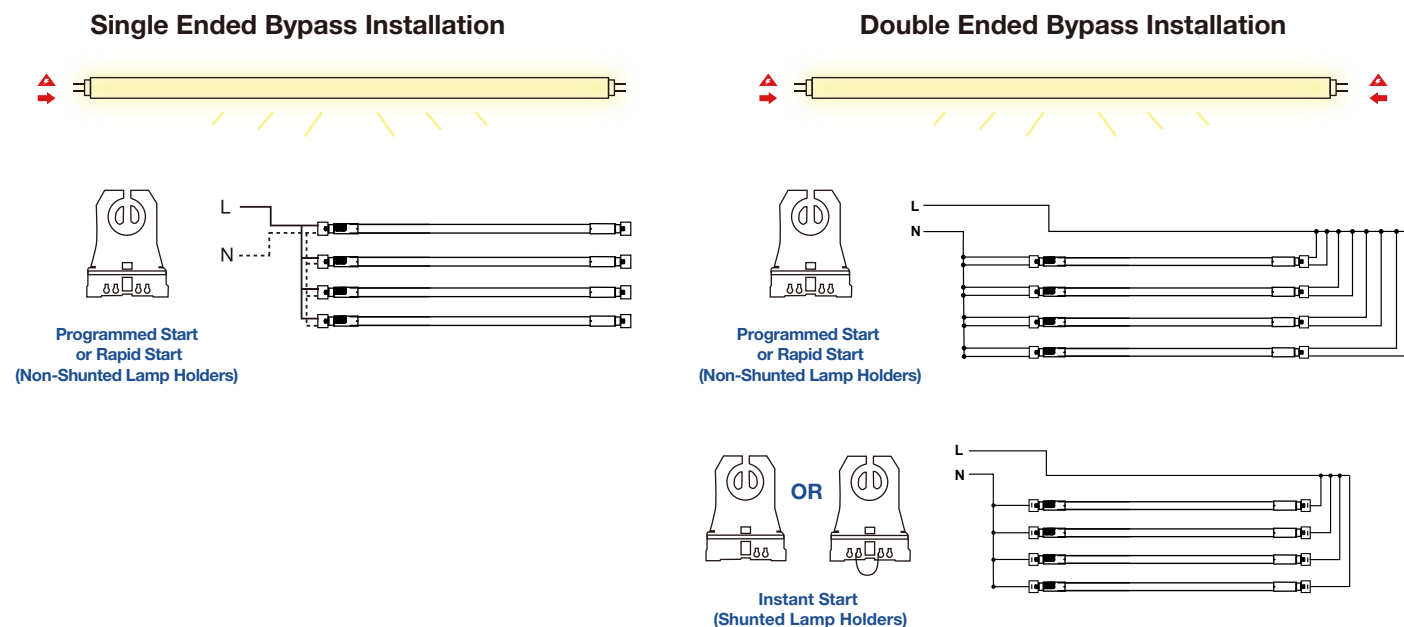




The CCT Select T5 UEB lamps provide four field-selectable color temperatures for both single ended and double ended installations with only one product, and with true ELV dimmer compatibility!

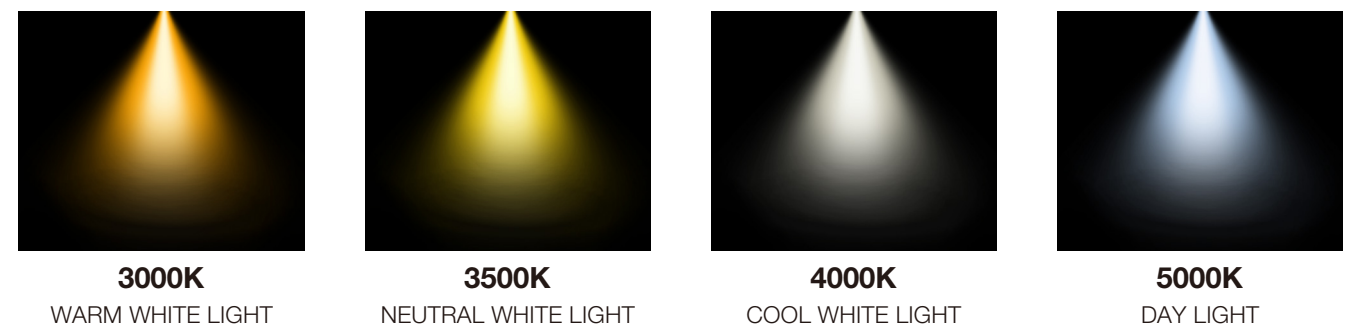
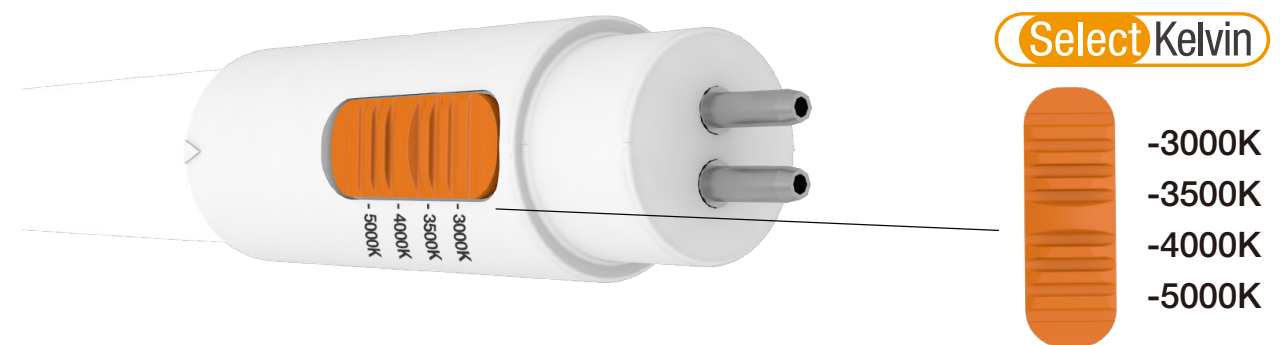
## UEB - Single Ended And Double Ended Bypass Installations

The lamps are engineered for both single ended and double ended installations, utilizing existing Shunted or Non-Shunted lamp holders. Removing the trouble of pre-inspection for installation feasibilities.



## Four Selectable Color Temperature

The integrated SelectKelvin switch allows lighting professionals to choose CCTs based on their project's requirements, adding optimized flexibility to each project.



## Balanced Light Output

GREEN CREATIVE T5 BYP/UEB eliminates the compatibility issue once and for ever. The compact design of driver enables a more balanced light output when installed in fixtures.

GREEN CREATIVE T5 BYP/UEB in the fixture



Other Brands T5 BYP/UEB in the fixture



## Smoothly ELV dimming

Compatible with standard ELV dimmers, allows you to effortlessly customize your lighting environment, perfect for homes, offices, or any space requiring versatile lighting solutions.



DIMMABLE

## 120-277V Universal Line Voltage – Maintenance Free

Operating directly on 120-277V line voltage without need of additional ballast, these UL Type B lamps eliminate the trouble of pre-inspection in the field, avoid un-expected ballast compatibility issues, and maintenance-free.



UNIVERSAL

## Long Lifetime – Warranty Protected

These UEB lamps are designed for L70 rated lifetime of 60,000 hours with 5 year standard warranty provided. 10 year extended warranty is also optional for even longer guarantee.



60,000 hrs



WARRANTY



UNIVERSAL



DIMMABLE



ENERGY SAVINGS



60,000 hrs



WARRANTY



GREENCREATIVE

**Your Partner For Professional  
Lighting Solutions**



CCT SELECT T5 UEB