

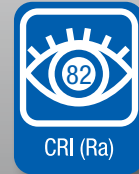
PANEL 38W 2X4' TITANIUM LED SERIES



PRO



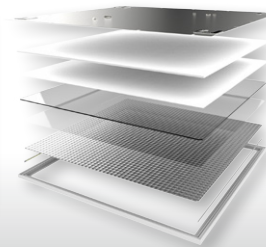
- ⌚ SootheOptic low glare technology UGR <19
- ⌚ Edge lighting and slim body design for tight ceilings
- ⌚ Recessed, surface mount or suspended installation
- ⌚ Integrated J-box for fast and easy wiring
- ⌚ 120-277V circuit and 0-10V dimming control compatible
- ⌚ Extra long 75,000 hour lifetime



PANEL PRODUCT FEATURES

Edge Lighting Technology

The PANEL ELEVATE Series uses the latest in edge lighting technology to produce a smooth uniform lighting effect. These sleek, low glare panels create a comfortable environment and install easily in all ceiling applications.



- BACK PLATE
- FOAM ALIGNING PLATE
- REFLECTOR
- LIGHT GUIDE PLATE
- DIFFUSER
- SootheOptic LOW GLARE
- EDGE LIGHTING
- TRIM

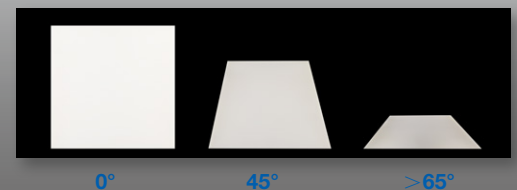
SootheOptic Low Glare Technology

These PANELS all feature SootheOptic technology that reduces high-angle light and minimizes visual glare. The smooth low glare diffuser gives each luminaire a soft cutoff without visible color separation.

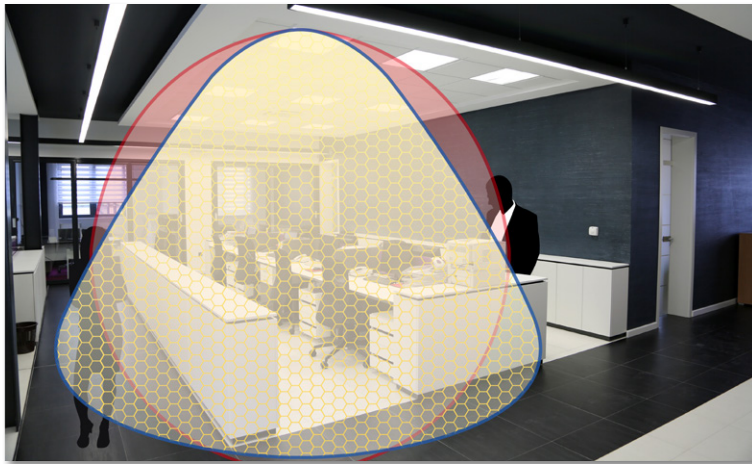
Glare Control Diffuser



Viewing Angle



UNIFIED GLARE RATING (UGR) <19



GREEN CREATIVE Panel
UGR <19

- Comfortable light at all viewing angles
- More useful light
- No perceptible discomfort

Standard LED Panel
UGR >23

- Harsh glare at viewing angles >65°
- More wasted light
- Perceptible discomfort

SPECIFICATIONS

Product Model	28349 38PAN24DIM/830/277V	28350 38PAN24DIM/835/277V	28351 38PAN24DIM/840/277V
Type	Panel 2x4'	Panel 2x4'	Panel 2x4'
Power (W)	38	38	38
Voltage - Frequency	120-277V 50-60Hz	120-277V 50-60Hz	120-277V 50-60Hz
Color Temp. (ANSI)	3000K	3500K	4000K
CRI (Ra)	82	82	82
Typical lumens (lm)	4150	4150	4300
Efficacy (LPW)	109	109	113
Beam Angle	95°	95°	95°
Dimmable	Yes	Yes	Yes
Power Factor	0.9	0.9	0.9
THD	<20%	<20%	<20%
Temperature Rating	-22°F/-30°C - 104°F/40°C	-22°F/-30°C - 104°F/40°C	-22°F/-30°C - 104°F/40°C
Rated Lifetime - L70 (hrs.)	75,000	75,000	75,000
Dimensions (LxWxH)	47.64"x23.62"x1.81" (600x1210x46mm)	47.64"x23.62"x1.81" (600x1210x46mm)	47.64"x23.62"x1.81" (600x1210x46mm)
Weight (lb. / g)	15.21lb. / 6.9kg	15.21lb. / 6.9kg	15.21lb. / 6.9kg

Note: To order the EMERGENCY BACKUP add /EM to the model number Ex. 38PAN24DIM/840/277V/EM

* Suitable for damp locations. Not for use where directly exposed to weather or water

ACCESSORY ORDERING INFORMATION

Model	Product	Description
MOUNTFRAME24	28391	2X4' Surface Mount Frame
SUSPCABLE24	28393	70.9" (1.8m) Aircraft Suspension Cable (Set of 6 Cables for 1 2X4' Fixture)