



IES LM-79-08

MEASUREMENT AND TEST REPORT

For

GREEN CREATIVE LTD

756 North Zhongshan Rd., Unit B301 Zhabei District, Shanghai, China

Test Model: 9A19DIM/830

Report Type:	Electrical and Photometric tests including: Luminous Flux, Chromaticity, Luminous Intensity Distribution
Test Engineer:	Hill Liu <i>Hill Liu</i>
Report Number:	R1KS160108005-10A1
Test Date:	2016-01-12
Report Date:	2016-10-20
Reviewed By:	Bill Xiong / EE Engineer <i>Bill Xiong</i>
Prepared By:	Bay Area Compliance Laboratories Corp. (Dongguan). Pu Long Cun 69, Puxinghu Industrial Area, Tangxia Town, Dongguan, Guangdong, P.R.China. Tel: +86-0769-86858888 Fax: +86-0769-86858588
Accreditation:	The IAS Accreditation Number TL-460.

Note: The test data was only valid for the test sample(s). This test report is prepared for the customer shown above and for the device described herein. It may not be duplicated or used in part without prior written consent from Bay Area Compliance Laboratories Corp. (Dongguan). This report is valid only with a valid digital signature. The digital signature may be available only under the Adobe software above version 7.0.

1. Product Description

General Information:

Two samples were received on 2016-09-14. One was tested in integrating sphere and the other was tested in goniophotometer

Model Tested: 9A19DIM/830
 Manufacturer: GREEN CREATIVE LTD
 Brand Name: GREEN CREATIVE
 Product Designation: Integral LED Lamp
 Burning Time Before Test: 0hour(For New Products)

Rated Values:

Rated Voltage/Frequency: 120V 60Hz
 Rated Power: 9 W
 Nominal CCT: 3000K
 Nominal Lumen Output: 820 lm

2. Standards Used

- IES LM-79-08: Approved Method: Electrical & Photometric Measurement of Solid-state Lighting Products
- ANSI C82.77-2002: Harmonic Emission Limits – Related Power Quality Requirements for Lighting
- IES TM-30-15: IES Method for Evaluating Light Source Color Rendition (This method is not in IAS accreditation scope)

3. Description of Test Equipment

Device	Manufacturer	Model No	Serial No	Test Range	Calibration date	Calibration due date
2.0m integrating sphere	EVERFINE	R98	11010018	R98	2015-11-09	2016-11-08
High accuracy array spectroradiometer	EVERFINE	HAAS-2000	1012016T	380-780nm	2016-03-10	2017-03-09
Digital Power Meter	EVERFINE	PF2010A	1011004	600V/20A	2016-07-11	2017-07-10
Digital CC&CV DC Power Supply	EVERFINE	WY305-V1	1101047	30V/5A	2016-07-07	2017-07-06
Temperature/humidity/clock	Victor	VC230	EE023	0~40°C0~90%	2016-03-21	2017-03-20
Standard Light Source	SENSING	N/A	LSD090808	N/A	2016-09-24	2017-09-23
Special zero-voltage synchronous switching AC	EVERFINE	DPS1010-YF	1011001T	0-150V, 0-300V	2016-03-04	2017-03-03
AC Power Supply	EVERFINE	VPS1030 PWM	1012017	0-150V, 0-300V	2016-03-04	2017-03-03
DC Power Supply	EVERFINE	WY12010	1009009	30V/5A	2016-03-04	2017-03-03
Power Meter	YOKOGAWA	WT-210	91KB35700	15/30/60/150/300/600 V	2016-03-04	2017-03-03
Goniophotometer	EVERFINE	GO-R5000	YG108492N10120001	1600mm,3000W/10A	2016-03-10	2017-03-09
Wireless Remote Sensor	N/A	433MHz	N/A	0°C~50°C;-20°C~60°C	2016-03-21	2017-03-20
Standard Light Source	EVERFINE	D908	1012003	N/A	2016-09-07	2017-09-06

Statement of Traceability: Bay Area Compliance Laboratories Corp. (Dongguan) attested that all calibration has been performed using suitable standards traceable to National Primary Standards and International System of Units (SI).

4. Test Method

Product was tested with no seasoning. All stabilization and measurements were made in compliance with IES LM-79-08. The product was operated at rated voltage or at voltage required by manufacturer. The ambient temperature of the sample was maintained at $25^{\circ}\text{C}\pm 1^{\circ}\text{C}$ during measurement. And relative humidity is less than 65%.

Integrating Sphere System

The system includes AC power source, digital power meter, DC power supply, Spectroradiometer, and integrating sphere. The integrating sphere system is calibrated by standard spectrum light source before measurement.

4π geometry was used during measurement. The product was operated in its intended orientation in application and was recorded in this report.

The uncertainty of the light output (luminous flux) measurements is $U=1.8\%$ ($K=2$), at the 95% confidence level. The uncertainty of the correlated color temperature measurements is $U=20\text{K}$ ($K=2$), at the 95% confidence level. The uncertainty of the CRI is $U=1.8(K=2)$, at the 95% confidence level.

The uncertainty of power meter AC current $U=0.19\%$ of rdg, AC Voltage $U=0.15\%$ of rdg, Power $U=0.20\%$ ($K=2$), at the 95% confidence level.

Goniophotometer System

The goniophotometer system is calibrated by standard light source before measurement.

Type C goniophotometer was used for measuring total luminous flux, luminous intensity distribution, and color spatial uniformity. The product was operated in its intended orientation in application and was recorded in this report. The vertical angle (γ) test intervals were set no more than 1 degree while data for 5 degree intervals is reported. The horizontal angle (C plane) test intervals were set no more than 22.5 degree.

The uncertainty of the luminous intensity is $U=1.6\%$ ($K=2$), at the 95% confidence level.

Fidelity Index and Gamut Index Calculation

The R_i , R_g was calculated according to IES TM-30-15 by using calculation tools. The calculation was based on the measured SPD from 380nm to 780nm with 1nm intervals. All the colors in this report is for reference only.

5. Test Result

[Integrating Sphere System]

Total operating time for integrating sphere test: **1.0 hour**

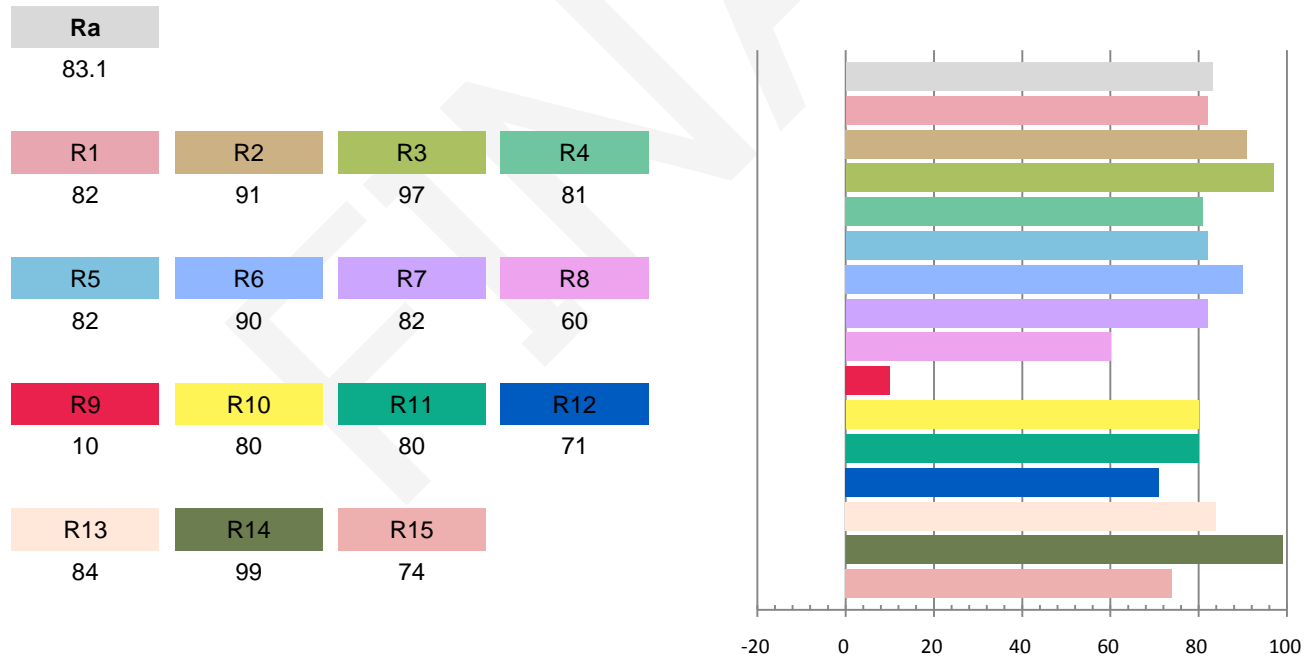
Test orientation: **Base up**

Photometric and Electrical Measurement Result

Voltage (V)	Frequency (Hz)	Current (A)	Power (W)	Power Factor	Luminous Flux(lm)	Efficacy (lm/W)
119.98	60	0.0772	8.55	0.9240	901.4	105.37

Radiant Flux (W)	CCT (K)	Duv	x	y	u'	v'
2.741	3020	0.00117	0.4372	0.4071	0.2494	0.5226

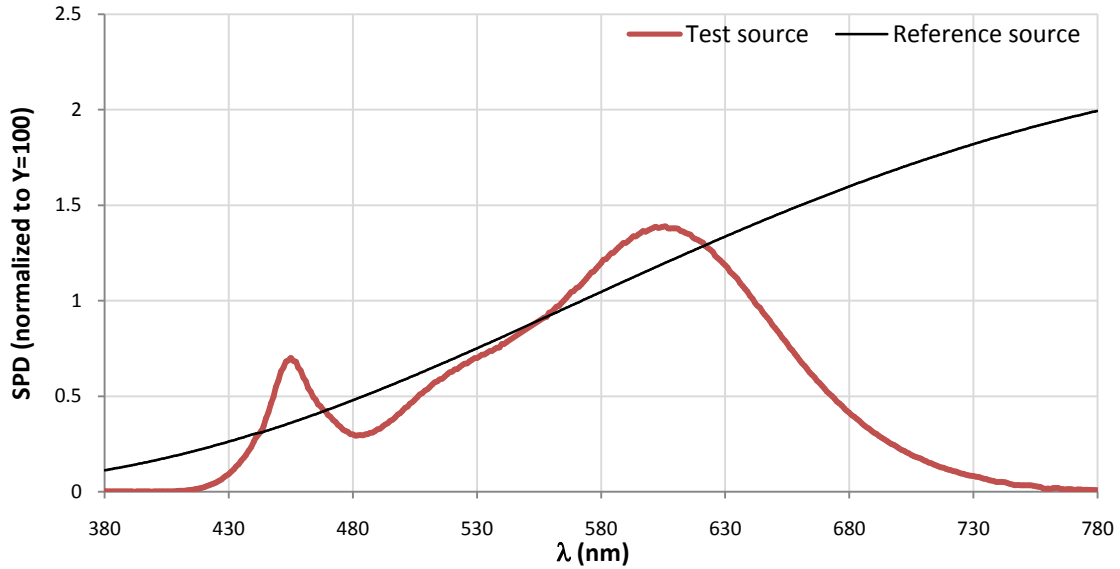
Color Rendering Index



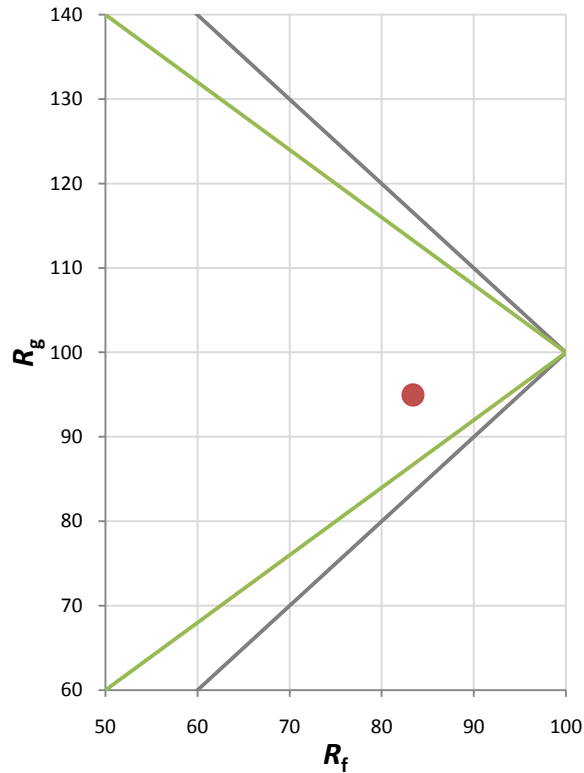
Fidelity Index and Gamut Index

Fidelity Index R_f	83
Gamut Index R_g	95

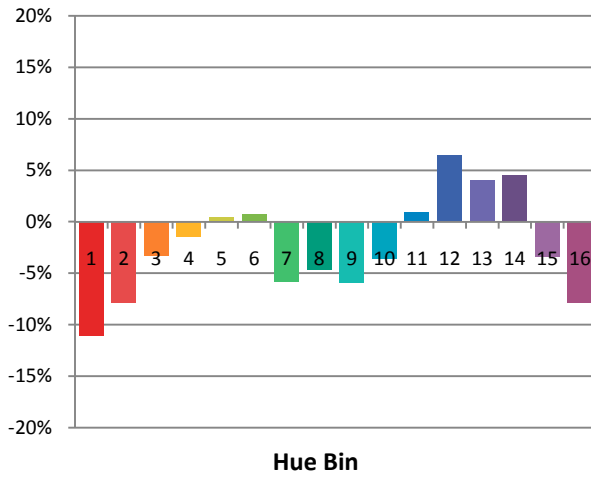
Spectral Power Distribution Comparison



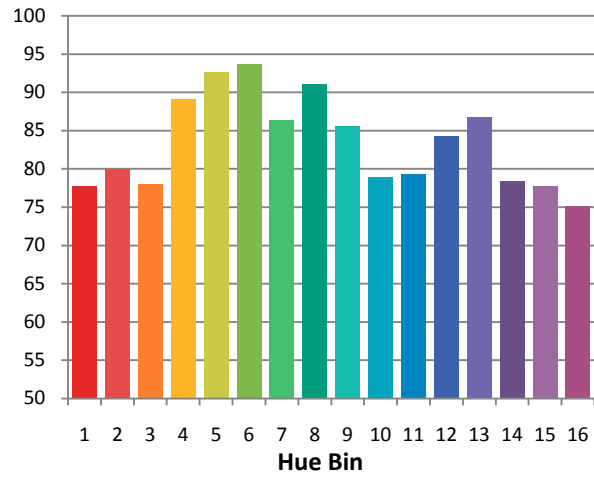
Plot of R_g versus R_f



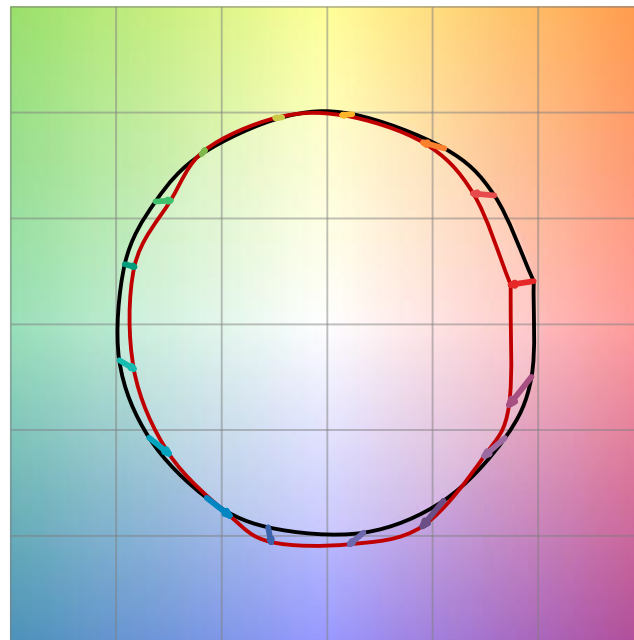
Chroma Shift by Hue



R_f by Hue

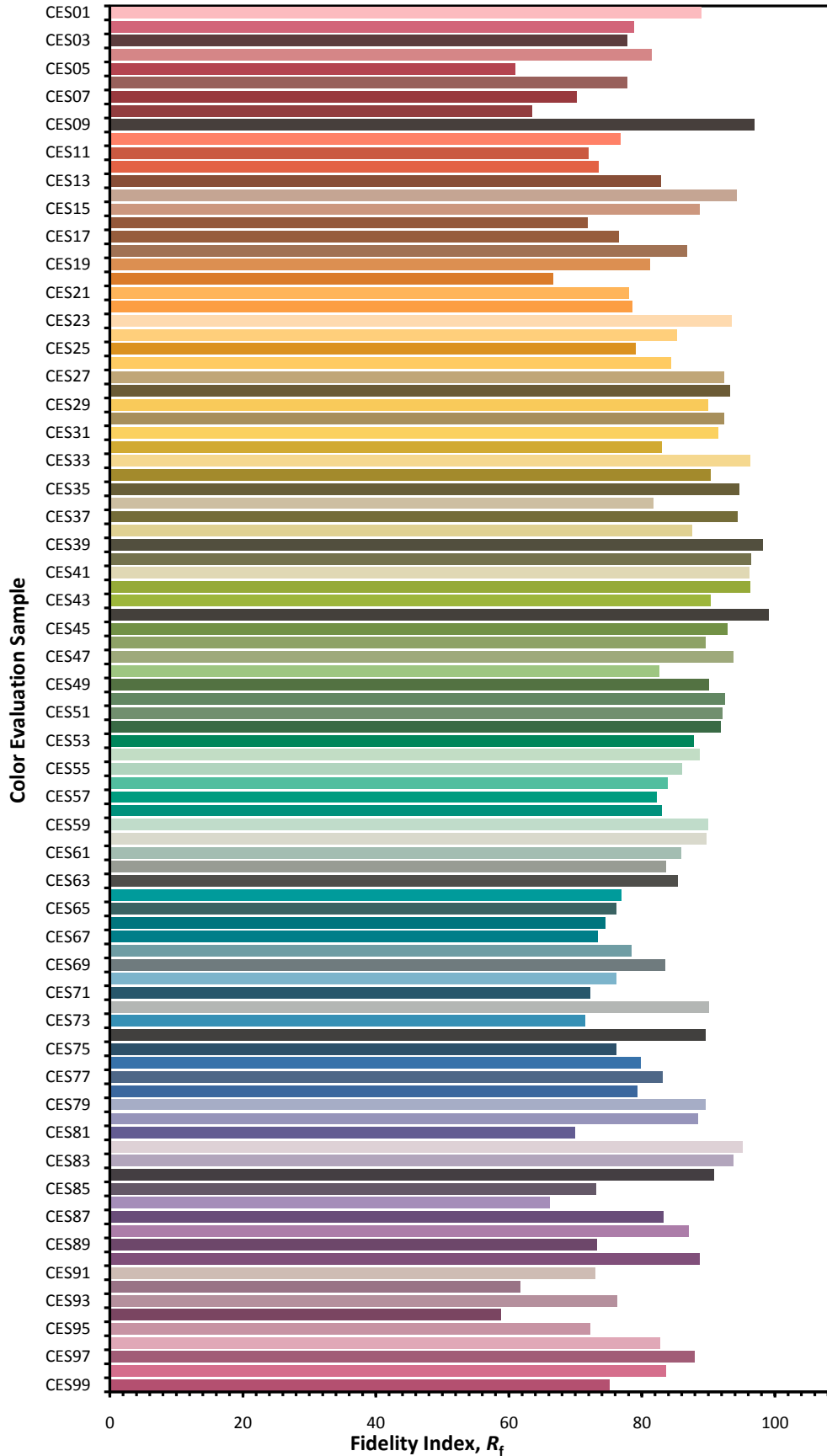


Color Vector Graphic

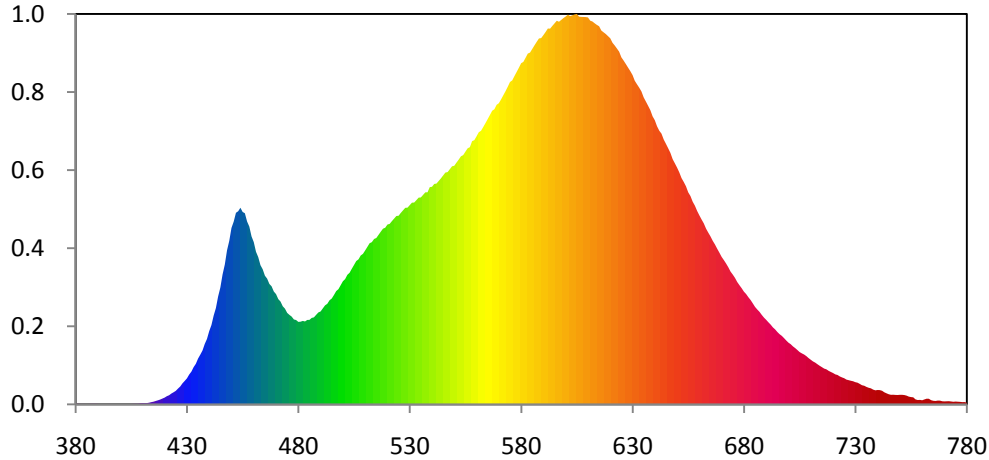


— Reference Illuminat — Test Source

Color Fidelity by CES Sample



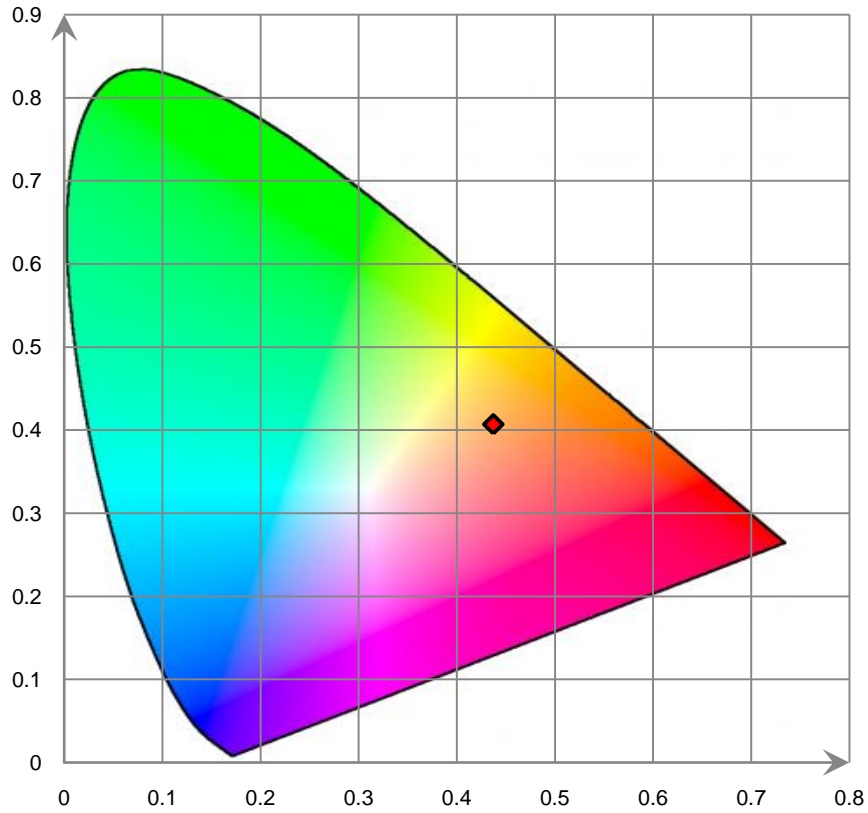
Relative Spectral Power Distribution



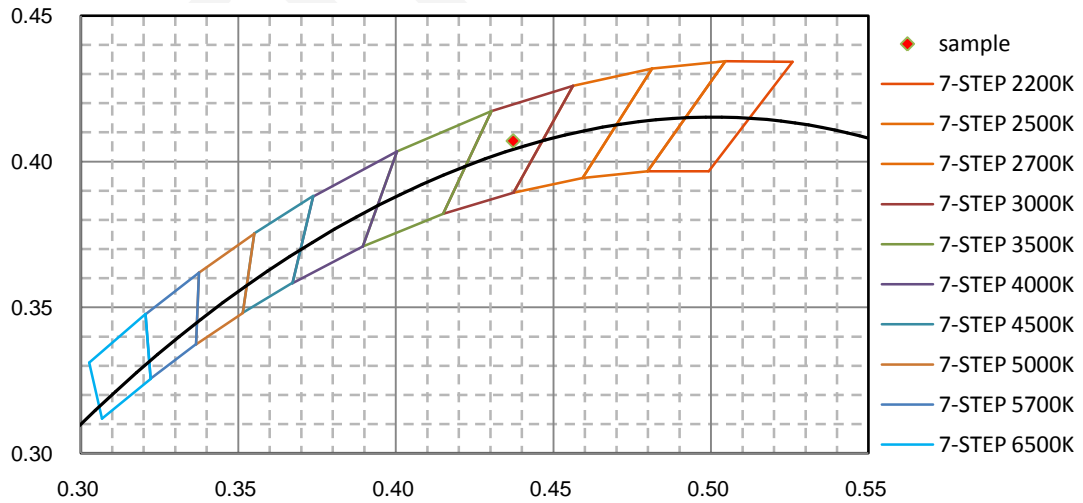
nm	mW	nm	mW	nm	mW	nm	mW	nm	mW
380	3.410E-02	421	3.853E-01	462	6.915E+00	503	6.180E+00	544	1.061E+01
381	2.960E-02	422	4.297E-01	463	6.535E+00	504	6.367E+00	545	1.075E+01
382	2.170E-02	423	5.086E-01	464	6.345E+00	505	6.549E+00	546	1.088E+01
383	2.090E-02	424	5.691E-01	465	6.041E+00	506	6.730E+00	547	1.091E+01
384	2.170E-02	425	6.354E-01	466	5.905E+00	507	6.809E+00	548	1.104E+01
385	1.340E-02	426	7.430E-01	467	5.655E+00	508	6.990E+00	549	1.118E+01
386	2.200E-02	427	8.419E-01	468	5.545E+00	509	7.067E+00	550	1.120E+01
387	2.580E-02	428	9.878E-01	469	5.298E+00	510	7.227E+00	551	1.135E+01
388	2.620E-02	429	1.101E+00	470	5.178E+00	511	7.398E+00	552	1.149E+01
389	2.600E-02	430	1.218E+00	471	4.944E+00	512	7.569E+00	553	1.165E+01
390	2.310E-02	431	1.399E+00	472	4.827E+00	513	7.617E+00	554	1.170E+01
391	1.260E-02	432	1.538E+00	473	4.609E+00	514	7.766E+00	555	1.187E+01
392	8.600E-03	433	1.747E+00	474	4.493E+00	515	7.811E+00	556	1.203E+01
393	1.020E-02	434	1.904E+00	475	4.296E+00	516	7.961E+00	557	1.208E+01
394	1.480E-02	435	2.150E+00	476	4.202E+00	517	8.106E+00	558	1.236E+01
395	2.180E-02	436	2.335E+00	477	4.124E+00	518	8.250E+00	559	1.241E+01
396	1.790E-02	437	2.532E+00	478	3.987E+00	519	8.294E+00	560	1.259E+01
397	1.680E-02	438	2.838E+00	479	3.960E+00	520	8.445E+00	561	1.278E+01
398	1.020E-02	439	3.073E+00	480	3.873E+00	521	8.475E+00	562	1.285E+01
399	7.900E-03	440	3.440E+00	481	3.883E+00	522	8.603E+00	563	1.302E+01
400	1.460E-02	441	3.724E+00	482	3.917E+00	523	8.725E+00	564	1.321E+01
401	1.820E-02	442	4.168E+00	483	3.894E+00	524	8.844E+00	565	1.340E+01
402	1.840E-02	443	4.524E+00	484	3.963E+00	525	8.857E+00	566	1.359E+01
403	1.450E-02	444	5.065E+00	485	3.970E+00	526	8.991E+00	567	1.379E+01
404	1.590E-02	445	5.488E+00	486	4.058E+00	527	9.111E+00	568	1.386E+01
405	1.940E-02	446	6.101E+00	487	4.086E+00	528	9.228E+00	569	1.407E+01
406	2.620E-02	447	6.566E+00	488	4.204E+00	529	9.235E+00	570	1.414E+01
407	3.030E-02	448	7.232E+00	489	4.318E+00	530	9.354E+00	571	1.432E+01
408	2.880E-02	449	7.678E+00	490	4.363E+00	531	9.471E+00	572	1.451E+01
409	5.250E-02	450	8.284E+00	491	4.508E+00	532	9.476E+00	573	1.471E+01
410	6.380E-02	451	8.583E+00	492	4.650E+00	533	9.590E+00	574	1.491E+01
411	5.750E-02	452	8.996E+00	493	4.723E+00	534	9.708E+00	575	1.514E+01
412	6.060E-02	453	9.068E+00	494	4.888E+00	535	9.716E+00	576	1.521E+01
413	7.940E-02	454	9.233E+00	495	4.971E+00	536	9.838E+00	577	1.542E+01
414	1.036E-01	455	9.034E+00	496	5.138E+00	537	9.956E+00	578	1.561E+01
415	1.268E-01	456	8.973E+00	497	5.318E+00	538	9.959E+00	579	1.581E+01
416	1.589E-01	457	8.587E+00	498	5.410E+00	539	1.020E+01	580	1.602E+01
417	1.900E-01	458	8.348E+00	499	5.593E+00	540	1.022E+01	581	1.608E+01
418	2.275E-01	459	7.886E+00	500	5.781E+00	541	1.035E+01	582	1.628E+01
419	2.738E-01	460	7.620E+00	501	5.882E+00	542	1.037E+01	583	1.647E+01
420	3.189E-01	461	7.167E+00	502	6.083E+00	543	1.049E+01	584	1.652E+01

nm	mW	nm	mW	nm	mW	nm	mW	nm	mW
585	1.669E+01	626	1.614E+01	667	7.507E+00	708	2.268E+00	749	4.401E-01
586	1.686E+01	627	1.598E+01	668	7.307E+00	709	2.174E+00	750	4.497E-01
587	1.702E+01	628	1.581E+01	669	7.120E+00	710	2.095E+00	751	4.496E-01
588	1.718E+01	629	1.565E+01	670	6.925E+00	711	2.017E+00	752	4.387E-01
589	1.720E+01	630	1.547E+01	671	6.773E+00	712	1.960E+00	753	4.114E-01
590	1.734E+01	631	1.519E+01	672	6.612E+00	713	1.884E+00	754	3.641E-01
591	1.749E+01	632	1.503E+01	673	6.435E+00	714	1.813E+00	755	3.426E-01
592	1.765E+01	633	1.487E+01	674	6.236E+00	715	1.748E+00	756	3.318E-01
593	1.764E+01	634	1.469E+01	675	6.093E+00	716	1.682E+00	757	2.351E-01
594	1.777E+01	635	1.442E+01	676	5.938E+00	717	1.647E+00	758	2.043E-01
595	1.789E+01	636	1.422E+01	677	5.744E+00	718	1.576E+00	759	2.105E-01
596	1.801E+01	637	1.402E+01	678	5.594E+00	719	1.522E+00	760	1.919E-01
597	1.797E+01	638	1.381E+01	679	5.452E+00	720	1.472E+00	761	2.313E-01
598	1.805E+01	639	1.353E+01	680	5.292E+00	721	1.410E+00	762	2.662E-01
599	1.814E+01	640	1.334E+01	681	5.179E+00	722	1.381E+00	763	2.636E-01
600	1.821E+01	641	1.306E+01	682	5.031E+00	723	1.315E+00	764	1.984E-01
601	1.830E+01	642	1.285E+01	683	4.900E+00	724	1.266E+00	765	1.685E-01
602	1.823E+01	643	1.271E+01	684	4.739E+00	725	1.228E+00	766	1.594E-01
603	1.827E+01	644	1.243E+01	685	4.576E+00	726	1.164E+00	767	1.787E-01
604	1.831E+01	645	1.223E+01	686	4.453E+00	727	1.137E+00	768	1.759E-01
605	1.833E+01	646	1.202E+01	687	4.344E+00	728	1.109E+00	769	1.472E-01
606	1.820E+01	647	1.181E+01	688	4.201E+00	729	1.085E+00	770	1.396E-01
607	1.819E+01	648	1.152E+01	689	4.074E+00	730	1.044E+00	771	1.453E-01
608	1.819E+01	649	1.132E+01	690	3.970E+00	731	1.017E+00	772	1.482E-01
609	1.819E+01	650	1.112E+01	691	3.852E+00	732	9.606E-01	773	1.348E-01
610	1.817E+01	651	1.089E+01	692	3.746E+00	733	8.977E-01	774	1.231E-01
611	1.802E+01	652	1.062E+01	693	3.615E+00	734	8.739E-01	775	1.317E-01
612	1.798E+01	653	1.044E+01	694	3.523E+00	735	8.201E-01	776	1.238E-01
613	1.789E+01	654	1.024E+01	695	3.399E+00	736	7.791E-01	777	1.192E-01
614	1.782E+01	655	9.954E+00	696	3.296E+00	737	7.510E-01	778	1.053E-01
615	1.775E+01	656	9.781E+00	697	3.218E+00	738	6.934E-01	779	1.081E-01
616	1.755E+01	657	9.517E+00	698	3.111E+00	739	6.598E-01	780	8.550E-02
617	1.747E+01	658	9.327E+00	699	3.000E+00	740	6.738E-01		
618	1.739E+01	659	9.082E+00	700	2.896E+00	741	6.696E-01		
619	1.729E+01	660	8.875E+00	701	2.825E+00	742	6.398E-01		
620	1.719E+01	661	8.680E+00	702	2.723E+00	743	5.689E-01		
621	1.698E+01	662	8.496E+00	703	2.644E+00	744	5.187E-01		
622	1.685E+01	663	8.253E+00	704	2.551E+00	745	4.744E-01		
623	1.671E+01	664	8.062E+00	705	2.456E+00	746	4.484E-01		
624	1.656E+01	665	7.887E+00	706	2.395E+00	747	4.521E-01		
625	1.629E+01	666	7.679E+00	707	2.341E+00	748	4.431E-01		

CIE 1931 x y Chromaticity Diagram



7-Step Chromaticity Quadrangles



[Goniophotometer System]

Total operating time for luminous intensity distribution: **1.0 hour**

Test orientation: **Base up**

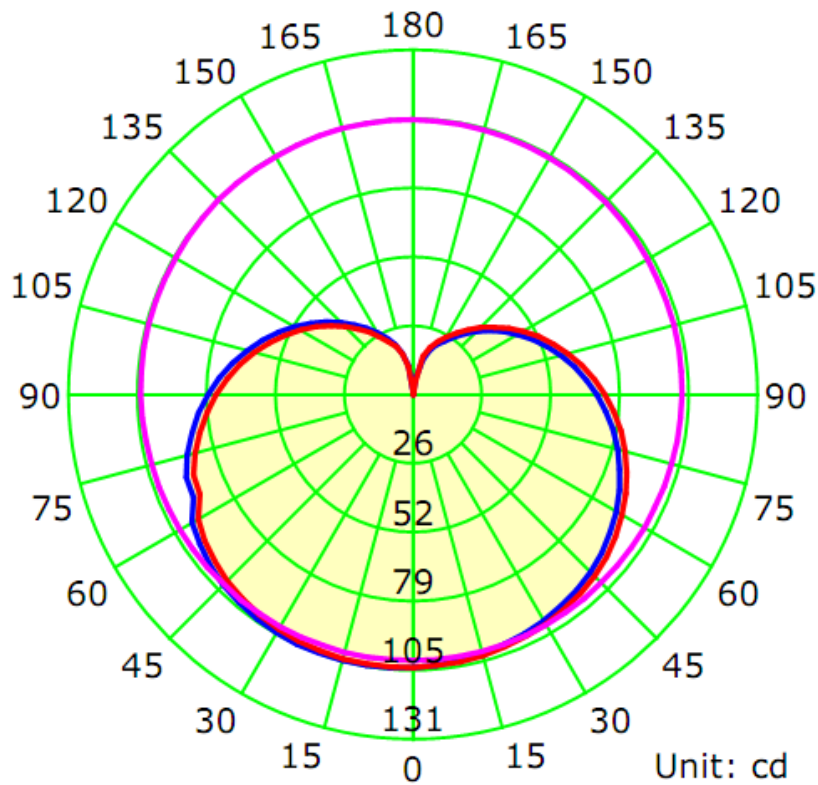
Electrical Measurement

Input Voltage (V)	Frequency (Hz)	Input Current (A)	Power (W)	Power Factor
120.0	60	0.0770	8.58	0.9290

Photometric Measurement

Luminous Flux (lm)	Efficacy (lm/W)	I _{max} (cd)	S/MH (C0/180)	S/MH (C90/270)
877.9	102.37	104.29	1.49	1.49

Luminous Intensity Distribution



	C0/180	C45/225	C90/270	C135/315	AVG.
Beam Angle (50% I _{max}):	232.0	232.4	233.2	232.7	232.6
Field Angle (10% I _{max}):	337.9	338.9	337.9	336.8	337.9

Luminous Intensity (cd) Distribution Data

C γ	0°	22.5°	45°	67.5°	90°	112.5°	135°	157.5°
0.0°	104	104	104	104	104	104	104	104
5.0°	104	104	104	104	104	104	104	105
10.0°	103	103	103	104	104	104	105	105
15.0°	103	102	103	103	103	104	104	105
20.0°	102	102	102	102	103	103	104	105
25.0°	101	101	101	101	102	103	104	105
30.0°	100	100	100	101	101	102	103	104
35.0°	99	99	99	100	101	102	103	104
40.0°	98	97	98	98	100	101	102	103
45.0°	96	96	96	97	98	99	101	102
50.0°	94	94	95	95	97	98	99	101
55.0°	92	92	93	94	95	96	98	99
60.0°	90	90	90	91	92	94	95	97
65.0°	87	87	88	89	90	91	93	95
70.0°	84	84	85	86	87	89	90	92
75.0°	81	81	82	83	84	86	87	89
80.0°	78	78	78	79	81	82	84	85
85.0°	74	74	75	76	77	79	80	82
90.0°	71	71	71	72	73	75	77	78
95.0°	67	67	67	68	70	71	73	74
100.0°	63	63	63	64	66	67	68	70
105.0°	59	59	59	60	62	63	64	66
110.0°	55	55	55	56	57	59	60	61
115.0°	50	51	51	52	53	54	56	57
120.0°	46	46	47	48	49	50	51	52
125.0°	42	42	43	44	45	46	47	48
130.0°	38	38	39	40	41	42	43	43
135.0°	35	35	35	36	37	38	38	39
140.0°	31	31	31	32	33	34	34	35
145.0°	27	27	28	28	29	30	31	31
150.0°	24	24	25	25	26	26	27	27
155.0°	21	21	21	22	22	23	24	24
160.0°	18	18	18	19	19	20	20	21
165.0°	14	14	14	15	15	12	15	16
170.0°	7	8	9	7	6	7	8	10
175.0°	0	0	0	0	0	0	0	1
180.0°	0	0	0	0	0	0	0	0

Luminous Intensity (cd) Distribution Data (cont.)

C Y	180°	202.5°	225°	247.5°	270°	292.5°	315°	337.5°
0.0°	104	104	104	104	104	104	104	104
5.0°	105	105	105	105	105	104	104	104
10.0°	105	105	105	105	105	104	104	103
15.0°	105	105	105	105	105	104	103	103
20.0°	105	106	105	105	104	104	103	102
25.0°	105	106	105	105	104	103	102	101
30.0°	105	105	105	105	104	102	101	100
35.0°	105	105	105	104	103	101	100	99
40.0°	104	104	104	103	102	100	99	98
45.0°	103	103	103	102	101	99	98	97
50.0°	102	102	102	101	99	97	96	95
55.0°	100	100	100	99	97	95	94	93
60.0°	98	98	98	97	95	93	91	90
65.0°	93	93	93	92	90	88	86	85
70.0°	93	93	93	92	90	88	86	85
75.0°	90	90	90	88	87	84	83	81
80.0°	86	87	86	85	83	81	79	78
85.0°	83	83	83	81	79	77	76	75
90.0°	79	79	79	77	76	74	72	71
95.0°	75	75	75	73	72	70	68	67
100.0°	70	71	70	69	67	65	64	63
105.0°	66	66	66	65	63	61	60	59
110.0°	62	62	61	60	59	57	56	55
115.0°	57	57	57	56	54	53	51	51
120.0°	53	53	52	51	50	48	47	46
125.0°	48	48	48	47	46	44	43	42
130.0°	44	44	43	42	41	40	39	38
135.0°	39	39	39	38	37	36	35	35
140.0°	35	35	35	34	33	32	31	31
145.0°	31	31	31	30	29	29	28	27
150.0°	27	27	27	27	26	25	24	24
155.0°	24	24	24	23	23	22	21	21
160.0°	21	21	21	20	20	19	18	18
165.0°	17	17	17	16	16	15	14	13
170.0°	12	12	12	12	11	10	9	7
175.0°	1	1	2	1	1	1	0	0
180.0°	0	0	0	0	0	0	0	0

Zonal Lumen Density Measurement

Deg	Flux (lm)	%	Deg	Flux (lm)	%
0-5	2.5	0.28	0-5	2.5	0.28
5-10	7.5	0.85	0-10	9.9	1.13
10-15	12.3	1.41	0-15	22.3	2.54
15-20	17.1	1.95	0-20	39.4	4.49
20-25	21.7	2.47	0-25	61.0	6.95
25-30	26.0	2.96	0-30	87.0	9.92
30-35	30.0	3.42	0-35	117.1	13.34
35-40	33.8	3.84	0-40	150.8	17.18
40-45	37.0	4.22	0-45	187.9	21.40
45-50	39.9	4.54	0-50	227.8	25.94
50-55	42.1	4.80	0-55	269.9	30.74
55-60	43.9	5.00	0-60	313.8	35.74
60-65	44.7	5.09	0-65	358.4	40.83
65-70	45.2	5.14	0-70	403.6	45.97
70-75	45.4	5.17	0-75	449.0	51.14
75-80	44.7	5.09	0-80	493.7	56.23
80-85	43.5	4.96	0-85	537.2	61.19
85-90	41.9	4.77	0-90	579.1	65.96
90-95	39.7	4.53	0-95	618.8	70.49
95-100	37.2	4.24	0-100	656.1	74.73
100-105	34.4	3.92	0-105	690.5	78.65
105-110	31.4	3.58	0-110	721.9	82.23
110-115	28.3	3.22	0-115	750.2	85.45
115-120	25.0	2.85	0-120	775.2	88.30
120-125	21.8	2.49	0-125	797.1	90.79
125-130	18.7	2.13	0-130	815.8	92.92
130-135	15.7	1.79	0-135	831.5	94.71
135-140	12.9	1.47	0-140	844.4	96.18
140-145	10.4	1.18	0-145	854.7	97.36
145-150	8.1	0.92	0-150	862.8	98.28
150-155	6.1	0.69	0-155	868.9	98.97
155-160	4.4	0.50	0-160	873.3	99.47
160-165	2.8	0.32	0-165	876.2	99.80
165-170	1.4	0.16	0-170	877.6	99.96
170-175	0.3	0.04	0-175	877.9	100.00
175-180	0.0	0.00	0-180	877.9	100.00

6. Product Photo



*****END OF REPORT*****