

# T5 14.5W HE 4FT. BYP TITANIUM LED SERIES



PRO



BYPass

14.5W REPLACES



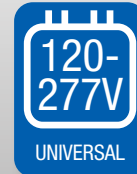
28W  
Fluo.

60% Energy Savings

- Build-in universal voltage driver - Bypass installation
- Symmetrical driver design provides uniform light output
- Wide beam design: 270° light emitting area
- Durable plastic construction meets NSF requirements
- High efficacy 138 LPW
- Suitable for use in totally enclosed fixtures



50,000 H



UNIVERSAL



EFFICACY



WARRANTY



82

CRI (Ra)



ENCLOSED



## TUBE FEATURES

### Symmetrical Driver Design

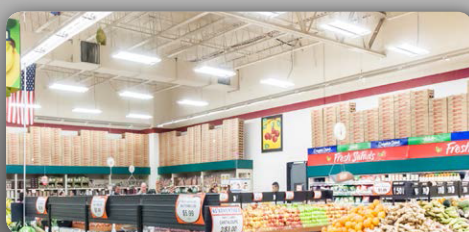
Unlike other T5 bypass tubes, GREEN CREATIVE's symmetrical driver design provides uniform light output for end-to-end lighting with no dark spots. This ensures fixtures maintain the traditional look of T5 fluorescent tubes.

GREEN CREATIVE T5 BYP

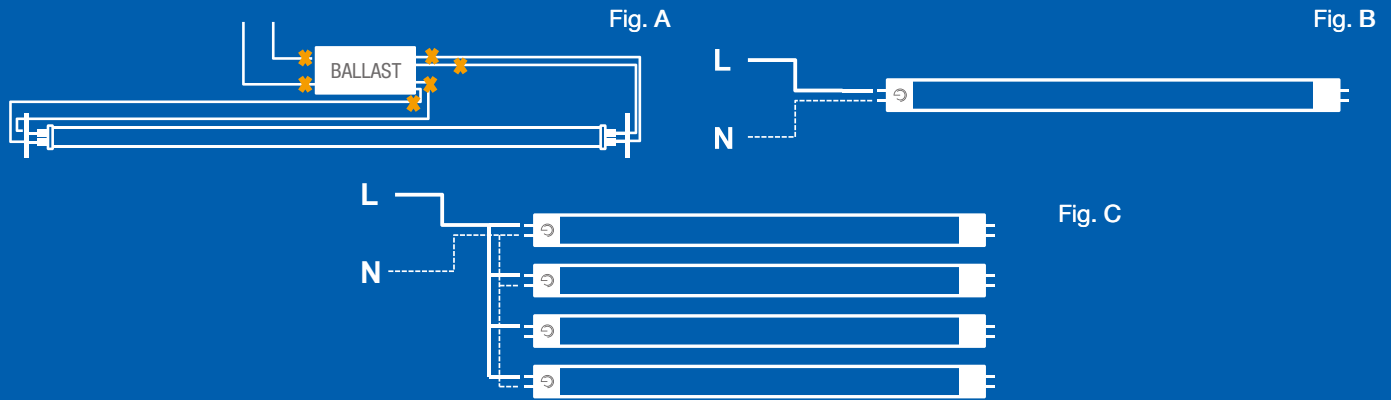


Other T5 BYP

### Suitable for All T5 Applications



### BYPASS INSTALLATION



- 🕒 Bypass ballast by cutting all wires as in Fig. A
- 🕒 Directly wire Live + Neutral on a single end as in Fig. B for single tube or as in Fig. C for multiple tubes
- 🕒 Replace shunted lamp holder with non-shunted one if applicable (Instant Start)
- 🕒 Existing fixture maintains original UL compliance thanks to UL1598C tube

### SPECIFICATIONS

Product Model	98293 14.5T5HE/4F/830/BYP	98294 14.5T5HE/4F/835/BYP	98295 14.5T5HE/4F/840/BYP
<b>Type</b>	T5	T5	T5
<b>Base</b>	Mini Bi-Pin G5	Mini Bi-Pin G5	Mini Bi-Pin G5
<b>Power (W)</b>	14.5	14.5	14.5
<b>Voltage - Frequency</b>	120-277V 50-60Hz	120-277V 50-60Hz	120-277V 50-60Hz
<b>Color Temp. (ANSI)</b>	Warm White 3000K	Neutral White 3500K	Cool White 4000K
<b>CRI (Ra)</b>	82	82	82
<b>Typical lumens (lm)</b>	1750	1800	2000
<b>Efficacy (LPW)</b>	121	124	138
<b>Light Emitting Area</b>	270°	270°	270°
<b>Beam Angle</b>	120°	120°	120°
<b>Dimmable</b>	No	No	No
<b>Power Factor</b>	0.9	0.9	0.9
<b>THD</b>	<20%	<20%	<20%
<b>Rated Lifetime - L70 (hrs.)</b>	50,000	50,000	50,000
<b>Dia. x MOL</b>	0.74" x 46" (19 x 1168mm)	0.74" x 46" (19 x 1168mm)	0.74" x 46" (19 x 1168mm)
<b>Weight (lb. / g)</b>	0.41lb. / 186g	0.41lb. / 186g	0.41lb. / 186g

\* Suitable for use in totally enclosed fixtures

\*\* Suitable for damp locations. Not for use where directly exposed to the weather or water

\*\*\* Full installation guide and more details available on website